

Overall Management Indicator

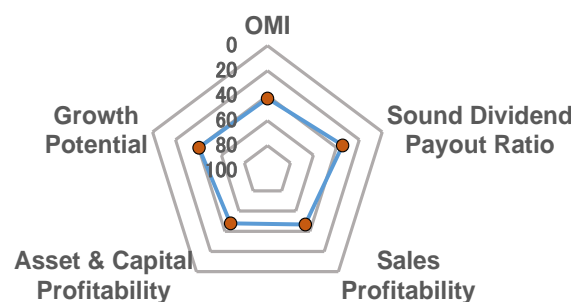
Spring Capital Co., Ltd.

(All 29 sectors)	Score	From the Top	Ranking	Score (50 as average in all companies)				
				30	40	50	60	70
Overall Management Indicator (OMI)	50.8	42.1 %	1435 among 3408	*****				

Major 4 Categories Composing "Overall Management Indicator"

	Score	From the Top	Ranking	Score (50 as average in all companies)				
				30	40	50	60	70
Growth Potential	50.7	40.3 %	1372 among 3408	*****				
Asset & Capital Profitability	49.6	47.9 %	1631 among 3408	*****				
Sales Profitability	48.8	46.7 %	1593 among 3408	*****				
Sound Dividend Payout Ratio	52.7	34.5 %	1176 among 3408	*****				

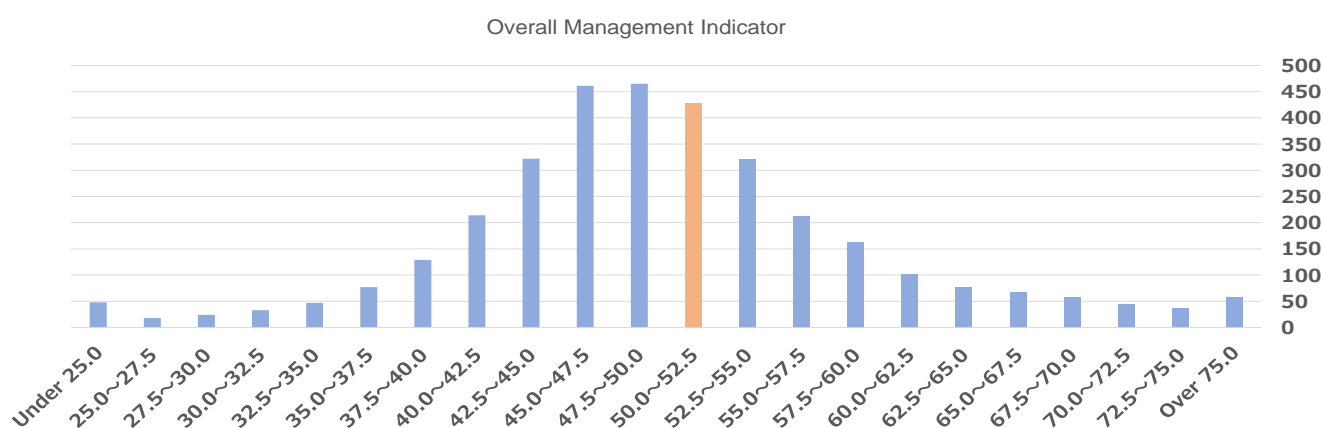
(In the Sector)	Score	From the Top	Ranking
Overall Management Indicator	50.8	44.0 %	107 among 243
Growth Potential	50.7	38.7 %	94 among 243
Asset & Capital Profitability	49.6	46.5 %	113 among 243
Sales Profitability	48.8	53.9 %	131 among 243
Sound Dividend Payout Ratio	52.7	35.4 %	86 among 243



... Within the Top 30%

Overall Management Indicator 3408 Companies in 29 Sectors Distribution Chart (Orange: the Company)

(right axis: no. of companies)



Overall Management Indicator Historical Ranking / Percentage from the Top

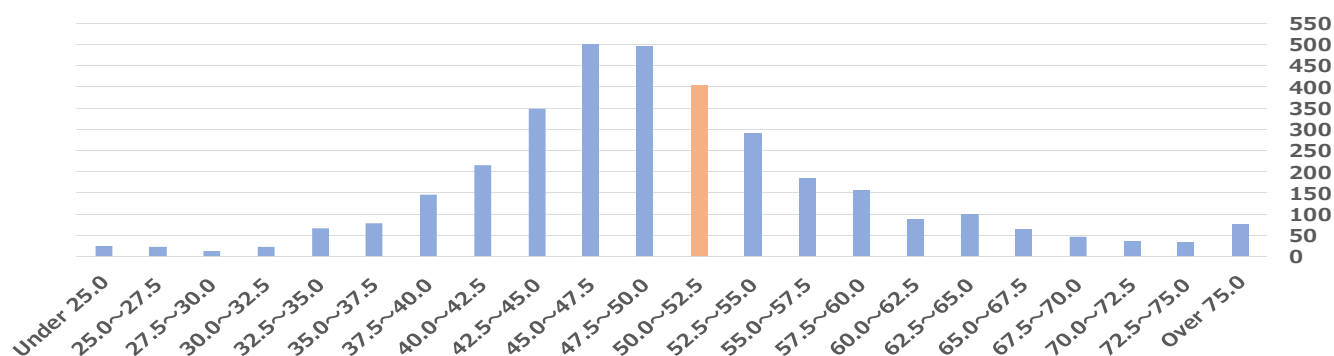
Accounting Period	FY2013	FY2014	FY2015	FY2016	FY2017	FY2018
Reference Date	May 2014	May 2015	May 2016	May 2017	May 2018	May 2019
No. of companies	3279	3220	3238	3326	3372	3408
Ranking	Excluded	445	315	554	695	1435
From the Top	Excluded	13.8 %	9.7 %	16.7 %	20.6 %	42.1 %

Management Indicators Ranking Report

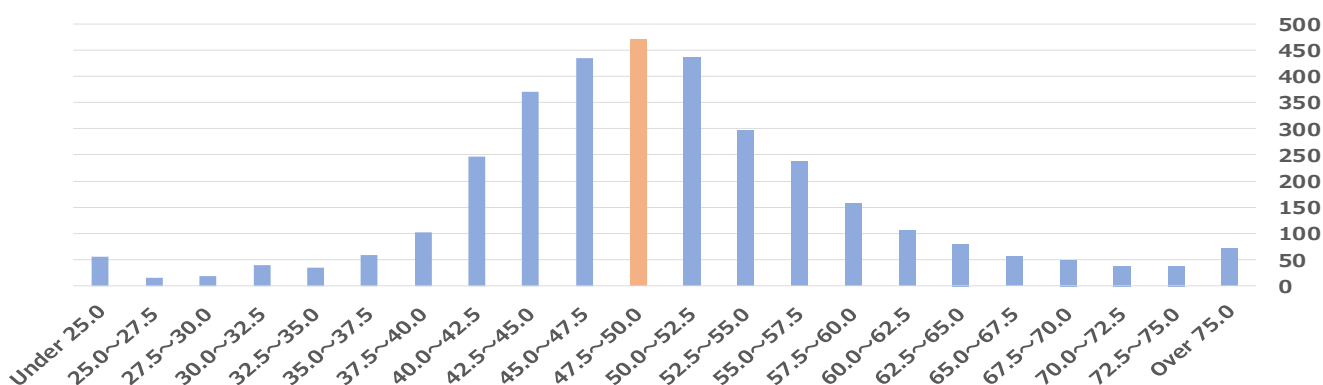
Distribution of All Companies in Major 4 Categories

Based on the data as of May 2019
June 7, 2019
Spring Capital Co., Ltd.

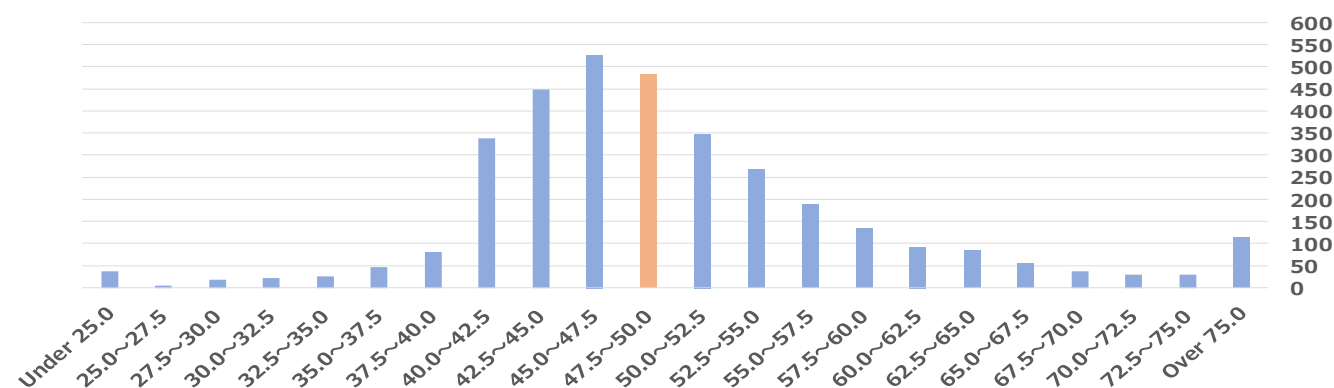
Growth Potential 3408 Companies in 29 Sectors Distribution Chart (Orange: the Company) (right: no. of companies)



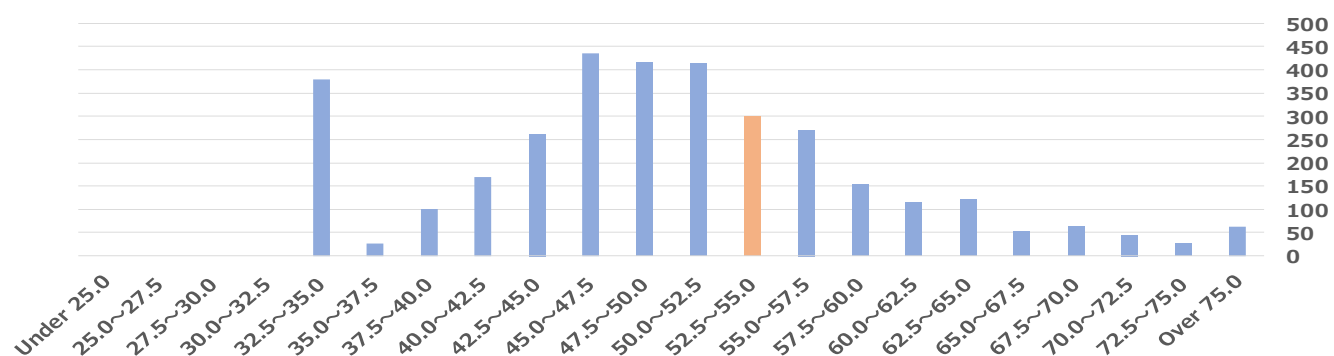
Asset & Capital Profitability 3408 Companies in 29 Sectors Distribution Chart (Orange: the Company) (right: no. of companies)



Sales Profitability 3408 Companies in 29 Sectors Distribution Chart (Orange: the Company) (right: no. of companies)



Sound Dividend Payout Ratio 3408 Companies in 29 Sectors Distribution Chart (Orange: the Company) (right: no. of companies)

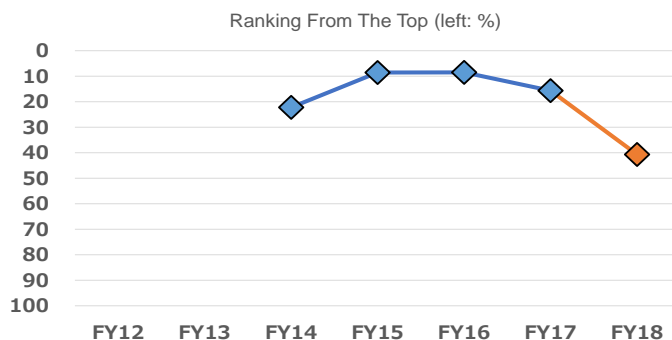
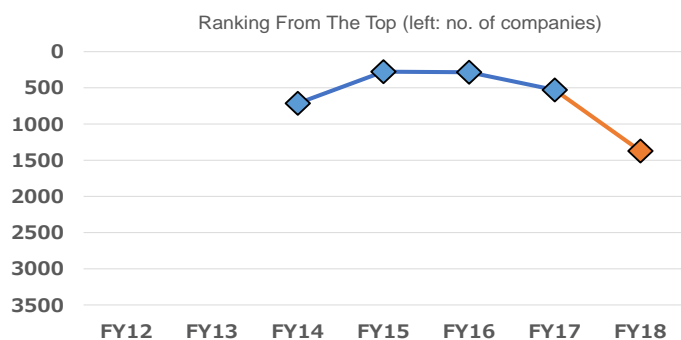


Management Indicators Ranking Report

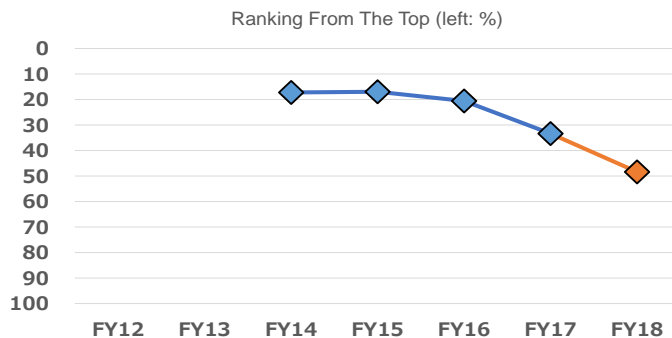
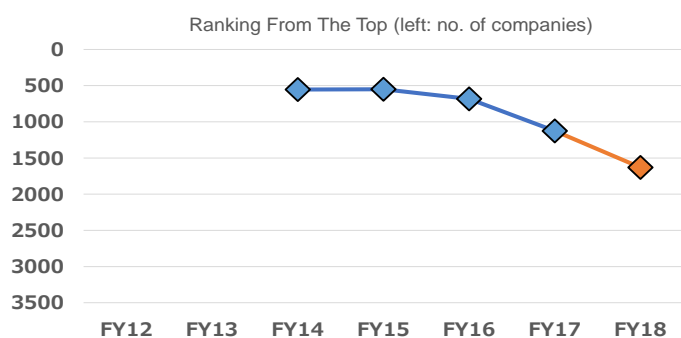
Historical Ranking of Major 4 Categories

Based on the data as of May 2019
June 7, 2019
Spring Capital Co., Ltd.

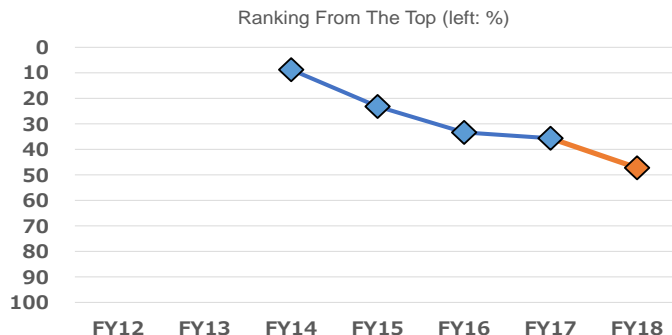
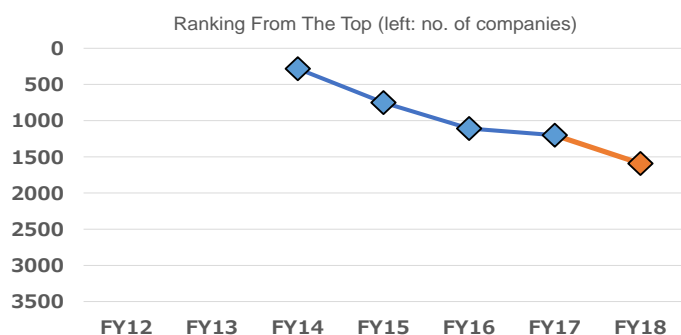
Growth Potential Historical Chart



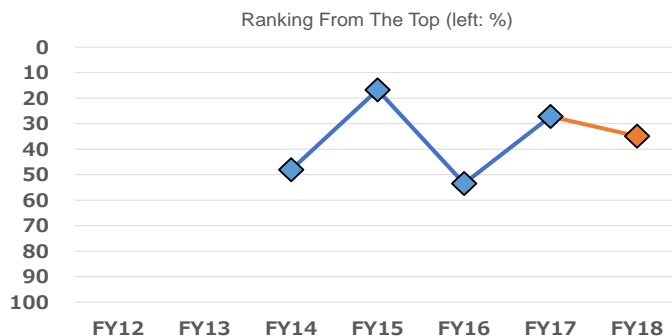
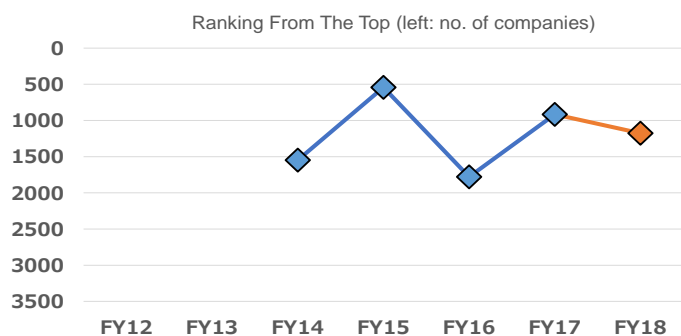
Asset & Capital Profitability Historical Chart



Sales Profitability Historical Chart



Sound Dividend Payout Ratio Historical Chart



Management Indicators Ranking Quintile Chart (All Categories)

	From the Top 80% ~ 100%	From the Top 60% ~ 80%	From the Top 40% ~ 60%	From the Top 20% ~ 40%	From the Top within 20%
【 Overall Management Indicator 】 ...★			★		

【 Major 4 Categories 】 ...☆	From the Top 80% ~ 100%	From the Top 60% ~ 80%	From the Top 40% ~ 60%	From the Top 20% ~ 40%	From the Top within 20%
【 Growth Potential 】			☆		
【 Asset & Capital Profitability 】			☆		
【 Sales Profitability 】			☆		
【 Sound Dividend Payout Ratio 】				☆	

Growth Potential - Intermediate Categories ...●	From the Top 80% ~ 100%	From the Top 60% ~ 80%	From the Top 40% ~ 60%	From the Top 20% ~ 40%	From the Top within 20%
< Minor Categories > ...◎					
(3 terms)					●
< Sales Growth Rate >					◎
< Operating Profit Growth Rate >				◎	
< Recurring Profit Growth Rate >				◎	
< Net Profit Growth Rate >				◎	
(Previous Term)		●			
< Sales Growth Rate >		◎			
< Operating Profit Growth Rate >	◎				
< Recurring Profit Growth Rate >		◎			
< Net Profit Growth Rate >				◎	
(This Term)	●				
< Sales Growth Rate >	◎				
< Operating Profit Growth Rate >	◎				
< Recurring Profit Growth Rate >	◎				
< Net Profit Growth Rate >	◎				

Management Indicators Ranking Quintile Chart (All Categories) Continued

Asset & Capital Profitability - Intermediate Categories ...●	From the Top 80% ~ 100%	From the Top 60% ~ 80%	From the Top 40% ~ 60%	From the Top 20% ~ 40%	From the Top within 20%
< Minor Categories > ...◎					
(ROA)			●		
< ROA 3 Terms >			◎	◎	
< ROA Previous Term >			◎		
< ROA This Term >		◎			
(ROE)			●		
< ROE 3 Terms >			◎	◎	
< ROE Previous Term >			◎		
< ROE This Term >		◎			

Sales Profitability - Intermediate Categories ...●	From the Top 80% ~ 100%	From the Top 60% ~ 80%	From the Top 40% ~ 60%	From the Top 20% ~ 40%	From the Top within 20%
< Minor Categories > ...◎					
(Previous Term)				●	
< Operating Profit ROS >			◎		
< Recurring Profit ROS >				◎	
< Net Profit ROS >			◎		
(This Term)			●		
< Operating Profit ROS >			◎		
< Recurring Profit ROS >			◎		
< Net Profit ROS >			◎		

Sound Dividend Payout Ratio - Intermediate Categories ...●	From the Top 80% ~ 100%	From the Top 60% ~ 80%	From the Top 40% ~ 60%	From the Top 20% ~ 40%	From the Top within 20%
< Minor Categories > ...◎					
(3 terms)			●		
< Dividend Payout Ratio >		◎			
< DOE >				◎	
(Previous Term)				●	
< Dividend Payout Ratio >					◎
< DOE >				◎	

Management Indicators Ranking report

Average of Management Indicator Scores by Sector

Based on the data as of May 2019

June 7, 2019

Spring Capital Co., Ltd.

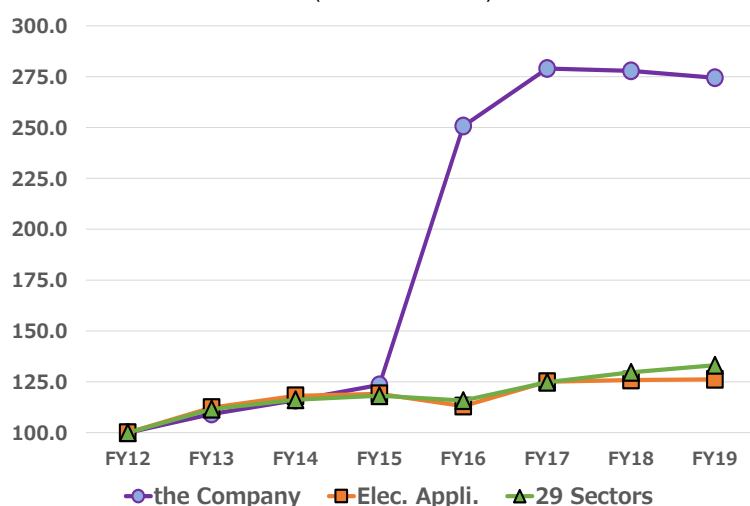
(Reference)

Scoring Average of Sector Management Indicators

	Number of companies	Overall Management Indicator	Ranking	Growth Potential	Ranking	Asset & Capital Profitability	Ranking	Sales Profitability	Ranking	Sound Dividend Payout Ratio	Ranking
Fishery, Agriculture & Forestry	11	46.6	24	47.6	21	47.5	20	46.8	24	48.3	22
Mining	5	49.7	10	52.2	5	47.4	23	53.2	3	46.7	26
Construction	164	49.9	9	49.2	11	51.4	5	48.9	16	50.1	9
Foods	124	47.8	16	47.8	19	48.0	18	47.3	22	50.5	6
Textiles and Apparels	55	45.0	27	46.4	26	44.2	27	46.8	25	48.6	20
Pulp and Paper	26	45.2	26	47.1	22	44.7	26	46.2	26	48.3	21
Chemicals	213	50.5	7	48.7	13	50.3	7	52.4	7	50.9	4
Pharmaceutical	63	44.9	28	46.7	23	41.9	29	48.4	17	48.8	18
Oil and Coal Products	11	52.3	4	53.6	4	52.0	4	49.6	13	50.4	7
Rubber Products	19	48.4	14	46.1	28	49.9	9	51.5	9	48.9	15
Glass and Ceramics Products	56	50.1	8	50.3	7	49.5	10	52.2	8	48.7	19
Iron and Steel	45	46.9	23	50.0	8	46.1	25	47.5	21	47.2	25
Nonferrous Metals	33	47.4	19	47.9	18	48.9	13	47.7	20	48.2	24
Metal Products	92	48.1	15	48.4	15	48.4	16	49.7	12	48.3	23
Machinery	227	50.8	6	49.2	12	50.1	8	53.3	2	50.6	5
Electric Appliances	243	48.9	11	48.5	14	48.5	15	50.5	11	50.0	11
Transportation Equipment	95	46.4	25	46.4	25	47.4	24	47.2	23	48.8	16
Precision Instruments	50	50.9	5	51.2	6	49.1	11	52.4	5	50.1	8
Other Products	108	47.7	18	46.6	24	47.5	22	48.2	19	51.5	1
Electric Power and Gas	24	48.6	13	49.8	10	47.5	21	49.4	15	49.3	14
Land Transportation	66	47.7	17	48.1	17	48.6	14	50.7	10	46.7	27
Marine Transportation	13	41.0	29	42.7	29	42.5	28	45.8	27	44.2	29
Air Transportation	5	47.2	20	46.4	27	51.3	6	49.4	14	45.6	28
Warehousing and Harbor Transportation	39	48.7	12	50.0	9	48.9	12	48.3	18	48.8	17
Information & Communication	411	53.8	3	54.5	2	52.9	3	53.0	4	49.9	12
Wholesale Trade	314	47.2	21	48.1	16	47.9	19	45.4	29	50.0	10
Retail Trade	344	47.0	22	47.7	20	48.4	17	45.6	28	49.3	13
Real Estate	128	56.5	1	55.7	1	55.1	1	56.1	1	51.5	2
Services	424	54.4	2	53.9	3	54.4	2	52.4	6	51.5	3
All Sectors	3408	50.0		50.0		50.0		50.0		50.0	

Growth Potential

Sales (FY2012 = 100)



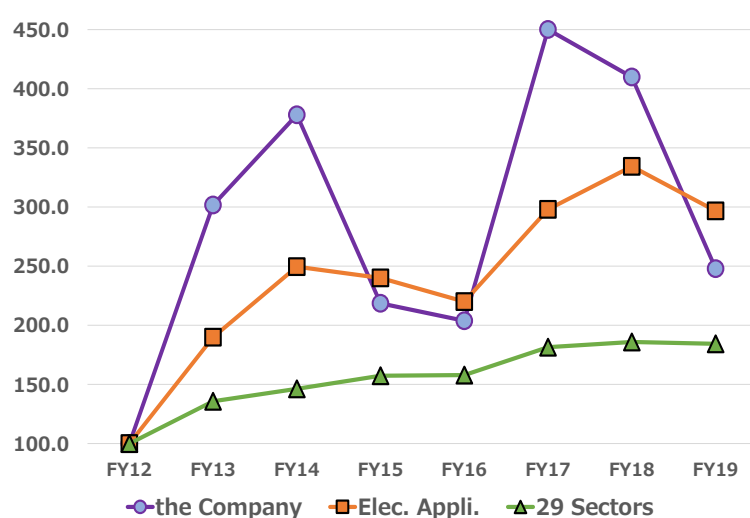
Sales Change (yoy, %)

the Company Elec. Appli. 29 Sectors

FY2013	9.2	12.3	11.5
FY2014	6.2	5.2	4.2
FY2015	6.5	0.9	1.7
FY2016	103.0	-5.1	-2.0
FY2017	11.3	10.6	7.7
FY2018	-0.4	0.7	3.9
FY2019	-1.2	0.2	2.7

FY2012 – FY2019			
7 Term Average	15.5	3.4	4.2

Recurring Profit (FY2012 = 100)



Recurring Profit Change (yoy, %)

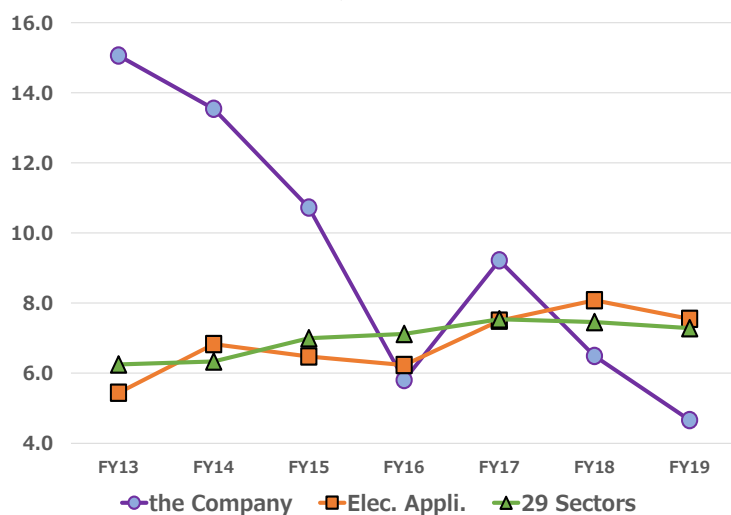
the Company Elec. Appli. 29 Sectors

FY2013	201.6	89.8	35.8
FY2014	25.3	31.5	7.7
FY2015	-42.2	-3.8	7.6
FY2016	-6.7	-8.4	0.4
FY2017	120.8	35.4	14.9
FY2018	-8.9	12.2	2.5
FY2019	-39.6	-11.3	-0.9

FY2012 – FY2019			
7 Term Average	13.8	16.8	9.1

Sales Profitability

Operating Profit ROS (%)



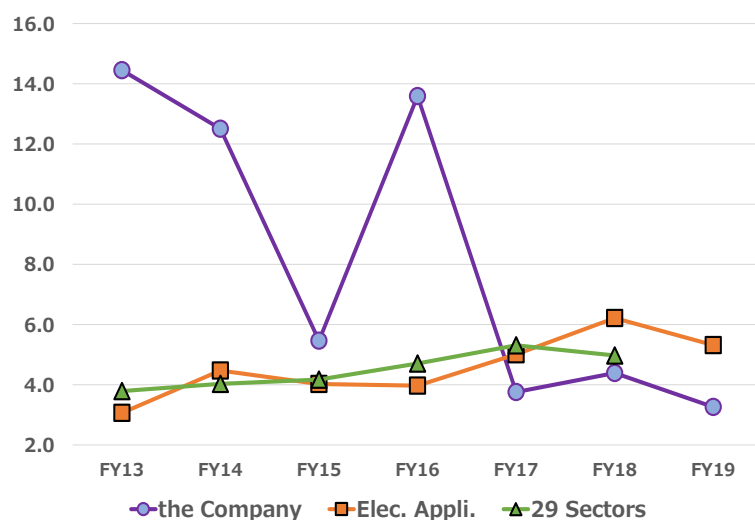
Operating Profit ROS (%)

the Company Elec. Appli. 29 Sectors

FY2013	15.1	5.4	6.3
FY2014	13.5	6.8	6.3
FY2015	10.7	6.5	7.0
FY2016	5.8	6.2	7.1
FY2017	9.2	7.5	7.5
FY2018	6.5	8.1	7.5
FY2019	4.7	7.5	7.3

FY2013 – FY2019			
7 Term Average	9.4	6.9	7.0

Net Profit ROS (%)



Net Profit ROS (%)

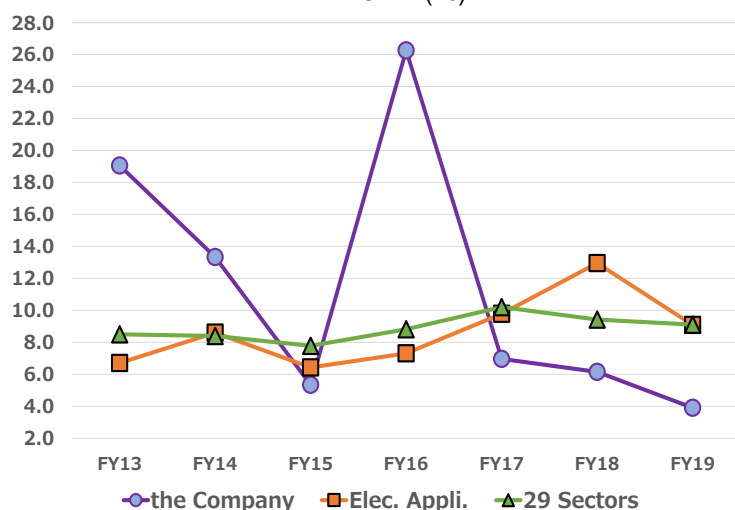
the Company Elec. Appli. 29 Sectors

FY2013	14.5	3.1	3.8
FY2014	12.5	4.5	4.0
FY2015	5.5	4.0	4.2
FY2016	13.6	4.0	4.7
FY2017	3.8	5.0	5.3
FY2018	4.4	6.2	5.0
FY2019	3.3	5.3	4.8

FY2013 – FY2019			
7 Term Average	8.2	4.6	4.5

ROE

ROE (%)



ROE (%)

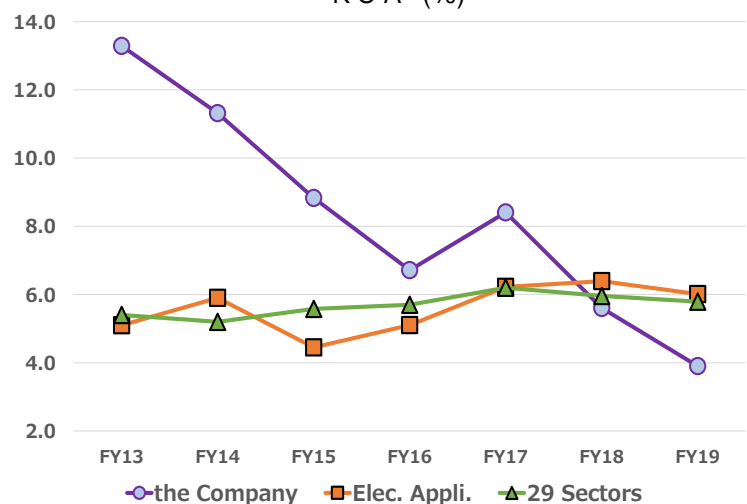
the Company Elec. Appli. 29 Sectors

FY2013	19.1	6.7	8.5
FY2014	13.3	8.6	8.4
FY2015	5.3	6.4	7.8
FY2016	26.3	7.3	8.8
FY2017	7.0	9.8	10.2
FY2018	6.2	13.0	9.4
FY2019	3.9	9.1	9.1

FY2013 – FY2019			
7 Term Average	11.6	8.7	8.9

ROA

ROA (%)



ROA (%)

the Company Elec. Appli. 29 Sectors

FY2013	13.3	5.1	5.4
FY2014	11.3	5.9	5.2
FY2015	8.8	4.4	5.6
FY2016	6.7	5.1	5.7
FY2017	8.4	6.2	6.2
FY2018	5.6	6.4	6.0
FY2019	3.9	6.0	5.8

FY2013 – FY2019			
7 Term Average	8.3	5.6	5.7

Simplified Fact Sheet

Valuation Data, Profitability Indicators and Ranking

June 7, 2019

Spring Capital Co., Ltd.

Valuation and Market Data as of June 7, 2019

Closing Price	1,165	Year High	1,338	2/13/2019
PER (estimated)	16.77	Year Low	982	5/21/2019
PER (actual)	12.31	6-Month % Change	-20.0 %	(TOPIX) -5.4 %
PBR (actual)	0.66	12-Month % Change	-21.3 %	(TOPIX) -14.3 %
Dividend Yield (actual)	3.26 %	12-Month Historical Volatility	47.2 %	(TOPIX) 17.0 %
EV/EBITDA	2.28			
PSR (forecast)	0.55			
PSR (actual)	0.54			

Profitability Indicators and All-Company Rankings Based on Business Results Announced by the Company
(29 sectors excluding financials) (calculated by Spring)

Fiscal Year		2014	2015	2016	2017	2018	2019
Accounting Period		2015/03	2016/03	2017/03	2018/03	2019/03	2020/03
		Actual	Actual	Actual	Actual	Actual	Est.
No. of Companies		3363	3443	3467	3512	3512	3556
Sales	Y mil	9,971	10,621	21,559	23,996	23,896	23,600
Ranking		2507	2499	1951	1887	1944	1959
Operating Profit	Y mil	1,350	1,139	1,251	2,212	1,550	1,100
Ranking		1640	1845	1813	1477	1718	1993
Recurring Profit	Y mil	1,678	970	905	1,998	1,820	1,100
Ranking		1540	1951	2053	1571	1638	2005
Net Profit	Y mil	1,247	580	2,930	902	1,049	770
Ranking		1405	1912	978	1836	1680	1950

* Percentage from the Top is not calculated for this section to exclude company size effects.

Operating Profit ROS	%	13.5	10.7	5.8	9.2	6.5	4.7
All Companies	%	5.7	6.2	6.7	7.3	7.2	7.3
Ranking		344	613	1587	901	1409	1995
Percentage from the Top	%	10.2	17.8	45.8	25.7	40.1	56.1
Recurring Profit ROS	%	16.8	9.1	4.2	8.3	7.6	4.7
All Companies	%	5.9	6.2	6.7	7.4	7.2	7.2
Ranking		243	845	2081	1082	1217	1999
Percentage from the Top	%	7.2	24.5	60.0	30.8	34.7	56.2
Net Profit ROS	%	12.5	5.5	13.6	3.8	4.4	3.3
All Companies	%	3.6	3.6	4.3	5.2	4.9	4.8
Ranking		201	971	194	1754	1457	1926
Percentage from the Top	%	6.0	28.2	5.6	49.9	41.5	54.2

ROE, ROA, Dividend Payout Ratio, and DOE Indicators and Rankings Based on Business Results Announced by the Company
(29 sectors excluding financials) (calculated by Spring)

Accounting Period		2014 2015/03 Actual	2015 2016/03 Actual	2016 2017/03 Actual	2017 2018/03 Actual	2018 2019/03 Actual	2019 2020/03 Est.
ROE	%	13.3	5.3	26.3	7.0	6.2	3.9
29 Sectors	%	8.4	7.8	8.8	10.2	9.4	9.1
Ranking		624	2072	146	1984	2065	2736
No. of Companies		3340	3421	3438	3493	3507	3549
Percentage from the Top	%	18.7	60.6	4.2	56.8	58.9	77.1

* ROE is an important indicator, calculated as net profit / equity (= shareholders' equity), that measures the final profit secured using shareholders' equity.

As the average of term-end equity of 2 terms is used as the denominator, companies posting zero or negative equity during the relevant terms are excluded.

ROE for the latest quarter is calculated using estimated net profit for this term and shareholders' equity as of the end of the previous term and of the latest quarter.

ROA	%	11.3	8.8	6.7	8.4	5.6	3.9
29 Sectors	%	5.2	5.6	5.7	6.2	6.0	5.8
Ranking		486	877	1383	1045	1744	2349
No. of Companies		3355	3427	3450	3540	3512	3556
Percentage from the Top	%	14.5	25.6	40.1	29.5	49.7	66.1

* ROA is calculated as Earnings before Interest and Taxes (operating profit + interest revenue + dividend income and interest on securities) / total assets. It is justifiable for a company to expand its business by financial leverage using debt, if the company's ROA exceeds the company's financing cost (e.g. cost of issuing 10-year corporate bonds = 2%).

Interest coverage ratio shown on P11 indicates the ratio of Earnings before Interest and Taxes to financial expenses (interest and discount expenses), with 10 times regarded as ideal.

If the interest coverage ratio holds a sufficient level with a high ROA and Profit Ratio of Sales, a company has no problem in financing aggressively.

As the average of term-end equity of 2 terms is used as the denominator, companies unable to be measured with the same standard are excluded.

ROA for the latest quarter is calculated using estimated operating profit for this term and total assets as of the end of the previous term and of the latest quarter.

Dividend Payout Ratio	%	23.3	58.6	10.4	37.8	40.5	
29 Sectors	%	31.2	33.8	30.1	27.4	32.4	
Ranking		1510	197	2512	509	573	
No. of Companies		3220	3238	3438	3525	3579	
Percentage from the Top	%	46.9	6.1	73.1	14.4	16.0	

* Dividend Payout Ratio is calculated as total dividend / net profit. It should be noted that it may differ from the figure announced by the companies calculated from profit per share according to the accounting principle.

Data for total annual dividend exceeding net profit and dividend of unprofitable companies are excluded from the rankings.

DOE	%	3.1	3.1	2.7	2.6	2.5	
29 Sectors	%	2.5	2.7	2.8	2.9	3.0	
Ranking		542	602	907	936	1172	
No. of Companies		3220	3238	3438	3493	3507	
Percentage from the Top	%	16.8	18.6	26.4	26.8	33.4	

* DOE, calculated as ROE times the dividend payout ratio, can be called the "true dividend payout ratio", and is closely tracked by global investors.

Its inverse (1 / DOE) equals the period (year) to recover shareholders' equity via the dividend.

As the average of term-end equity of two terms is used as the denominator, companies posting zero or negative equity during the relevant terms are excluded.

Simplified Fact Sheet

June 7, 2019

Review of Financial Indicators and Financial Soundness based on Business Results

Spring Capital Co., Ltd.

Management Indicators, Cash Flow, and Financial Indicators Calculated by Spring based on Business Results Announced by the Company (million yen, %, multiple)

Fiscal Year Accounting Period		2014 2015/03	2015 2016/03	2016 2017/03	2017 2018/03	2018 2019/03	Latest Quarter
Data Source		Securities Report	Securities Report	Securities Report	Securities Report	Financial Results	
Current Ratio	%	570.1	666.9	296.1	316.0	320.5	
Fixed Assets Ratio	%	22.3	19.8	57.2	43.6	43.3	
Equity Ratio	%	82.3	83.9	45.3	51.8	69.0	
Debt Ratio	%	21.0	18.8	84.1	61.4	44.6	
D/E Ratio	%	1.2	0.1	54.4	34.9	24.1	
Interest Coverage Ratio	Multiple	452.0	1,154.0	31.3	69.9	52.6	
Financial Leverage	Multiple	1.2	1.2	2.2	1.9	1.4	
CF from Operating Activities	Y mil	1,736	1,302	1,635	2,335	2,699	
CF from Investing Activities	Y mil	-1,412	-169	2,714	-697	-3,256	
CF from Financing Activities	Y mil	290	-422	-994	1,151	-928	
(Cash and Cash Equivalents)	Y mil	(6,478)	(6,855)	(9,714)	(12,280)	(10,883)	
(EBITDA)	Y mil	(2,085)	(1,412)	(2,165)	(2,964)	(2,935)	

Review of Financial Soundness as of June 7, 2019

Comparison with average data of all companies in the TSE 29 industrial sectors (excluding 4 financial sectors) and with the sector

		A 29 sectors	B Sector	Standard Criterion	Standard Value	Desirable Value	The Company	Result
Current Ratio	%	145.1	160.8	Lower of A or B	145.1	Higher	320.5	Positive
Fixed Assets Ratio	%	138.7	118.2	Higher of A or B	138.7	Lower	43.3	Positive
Equity Ratio	%	40.9	42.5	Lower of A or B	40.9	Higher	69.0	Positive
Debt Ratio	%	137.6	126.8	Higher of A or B	137.6	Lower	44.6	Positive
D/E Ratio	%	142.8	124.6	Higher of A or B	142.8	Lower	24.1	Positive

Corporate Information as of June 7, 2019

Ticker Code	6616		
Company Name	TOREX SEMICONDUCTOR LTD.		
Head Office	3F Unizo Shinkawa Eitai Dori Bldg., 1-24-1 Shinkawa, Chuo-ku, Tokyo 104-0033 JAPAN		
Stock Listings	The Tokyo Stock Exchange, First Section		
TSE Industrial Sector	Electric Appliances		
Investment Unit	100 shares		
Minimum Investment	116,500	President	Koji Shibamiya
Date of Listing	4/8/2014	Paid-in Capital	2,967 mil yen
Date of Establishment	3/31/1995	Market Capitalization	13,461 mil yen ranked 2,061 of 3,765 companies
Accounting Period	March	25-Day Average Trading Value	98 mil yen ranked 1,395 of 3,765 companies
Floating Stock Ratio	20.9%	Market Cap as of March-end 2019	13,888 mil yen ranked 2,061 of 3,760 companies
Major Shareholder Ownership	56.5%	Average Trading Value in FY2018	153 mil yen ranked 1,360 of 3,760 companies

Disclaimers

- This report has been prepared under a contract between TOREX SEMICONDUCTOR LTD. (hereafter "the Company") and Spring Capital Co., Ltd. (hereafter "SC") by SC. In the contract, the Company has consented that SC prepare this report based entirely upon the standards of SC only and excluding any intervention from the Company on all items, including qualitative information, management indicators adopted in the Management Indicators Rankings, and classification of business sectors (or the Company's business sector) chosen for the comparison reports.
- This report has been compiled for the purpose of companies to monitor objectively prepared rankings of management indicators, and is not aimed at soliciting investment. Therefore, investment decisions or activities should be made or done solely based on the investors' judgements, and the Company and SC are not responsible for any investment or result.
- SC has not placed a restriction on the Company regarding the distribution of this report, but all intellectual property rights, including the copyright of the Management Indicators Rankings and all the data associated with the comparison report, belong to SC. Consequently, persons such as the readers of this report are strictly prohibited from the publishing, reproducing, disclosing, etc., of materials including this report and the data in this report (including via electronic media) without SC's permission.

Disclaimers on Overall Management Indicator

- "All sectors" in this report refer to the 29 sectors that remain when excluding the four financial sectors (Banks, Securities and Commodity Futures, Insurance, and Other Financials), which use different accounting standards, from the 33 sectors as defined by Tokyo Stock Exchange, and consist of all companies whose common shares were listed on the Japanese stock market as of the end of March 2019. Given that the calculations of the Growth Potential, the ROA, the ROE, and other items use figures of full-year financial results for the most recent four fiscal years, companies that had not released full-year financial results and companies that had posted zero or negative equity at least once during the four-year period, as well as companies whose disclosed full-year financial results cannot be recalculated into reasonable figures based on the Japanese GAAP and companies that had not been able to disclose the FY2018 financial results by May 20, 2019, are excluded. Thereby, a total of 3,408 companies have been analyzed in the rankings.
- The numbers used in this report for FY2019 are adopted from one of the following sources in the order of decreasing priority: (1) numbers in a company's disclosed financial results; (2) the company's forecasts; or (3) the estimates by SC. In this FY2018 finalized report (as of May 2019), SC's estimates for FY2019 were used for 70 companies.
- On P7-P8, a historical comparison is made on Growth Potential, Sales Profitability, ROE, and ROA with 29 business sectors and with the Company's sector as defined by the Tokyo Stock Exchange. The figures for ROE and ROA used in the comparison match those on P10. However, for Growth Potential and Sales Profitability, the figures do not match those on P9. This difference is due to the fact that, for the purpose of comparing the Growth Potential over the long term, the comparative report limits its target to only those companies in the 29 business sectors and the Company's sector (as defined by the Tokyo Stock Exchange) that have continuously announced their full-year financial results from FY2010 to FY2018. This modification of the universe for the comparison of the Growth Potential is conducted every year in the finalized ranking report for the previous fiscal year based on values available as of May (this report).
- Going forward, the reports for FY2019 are planned to be prepared on a quarterly basis in correspondence with the announcements of quarterly results by companies whose accounting period ends in March. Accordingly, reports based on the values available as of August, November, and February will be issued the following month. The finalized report for FY2019 will be based on the values available as of May 2020 and will be issued the following month.
- The Overall Management Indicator (as scored by SC) in this report represents an overall score for the major categories (Growth Potential, Asset & Capital Profitability, Sales Profitability, and Sound Dividend Payout Ratio). The weighting for each category is 30%, 25%, 20%, and 25%, respectively.
- The data in this report on corporate financial results are owned by SC, and a part of the data has been verified for greater accuracy with information vendors with which SC has a contract. However, SC does not guarantee integrity of its data. The content of this report was relevant as of the time of compilation and may change without prior notice.