

Overall Management Indicator

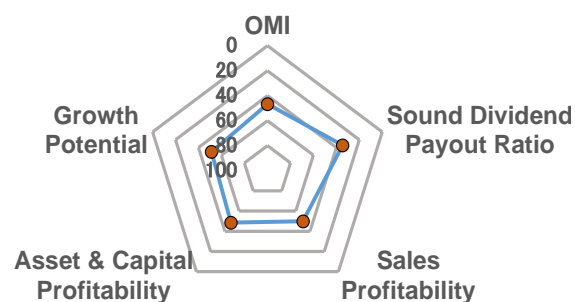
Spring Capital Co., Ltd.

(All 29 sectors)	Score	From the Top	Ranking	Score (50 as average in all companies)				
				30	40	50	60	70
Overall Management Indicator (OMI)	50.1	46.7 %	1591 among 3408	*****				

Major 4 Categories Composing "Overall Management Indicator"

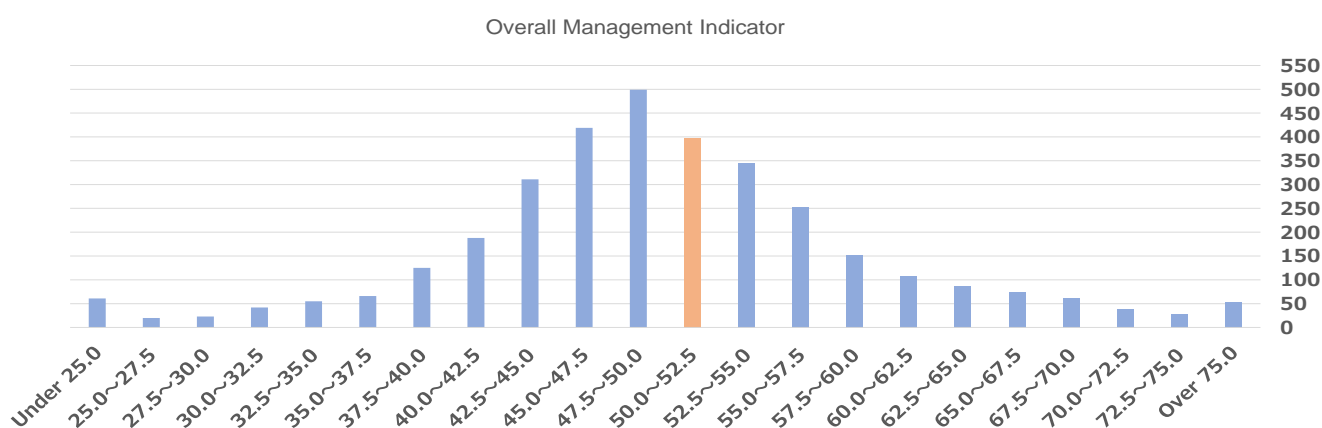
				30	40	50	60	70
Growth Potential	49.2	51.3 %	1747 among 3408	*****				
Asset & Capital Profitability	49.6	48.5 %	1653 among 3408	*****				
Sales Profitability	48.4	49.8 %	1697 among 3408	*****				
Sound Dividend Payout Ratio	52.7	34.5 %	1176 among 3408	*****				

(In the Sector)	Score	From the Top	Ranking
Overall Management Indicator	50.1	46.5 %	113 among 243
Growth Potential	49.2	42.0 %	102 among 243
Asset & Capital Profitability	49.6	45.3 %	110 among 243
Sales Profitability	48.4	54.7 %	133 among 243
Sound Dividend Payout Ratio	52.7	35.4 %	86 among 243

 ... Within the Top 30%

Overall Management Indicator 3408 Companies in 29 Sectors Distribution Chart (Orange: the Company)

(right axis: no. of companies)



Overall Management Indicator Historical Ranking / Percentage from the Top

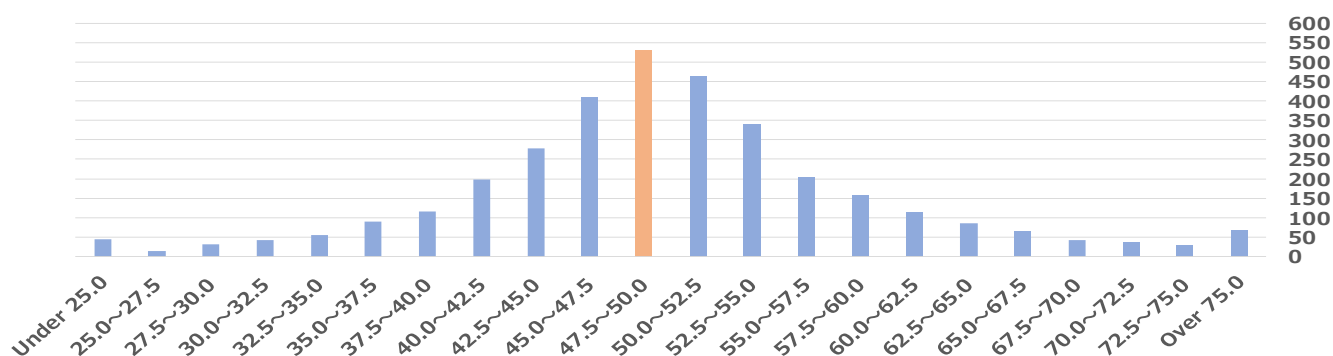
Accounting Period	FY2013	FY2014	FY2015	FY2016	FY2017	FY2018
Reference Date	May 2014	May 2015	May 2016	May 2017	May 2018	May 2019
No. of companies	3279	3220	3238	3326	3372	3408
Ranking	Excluded	445	315	554	695	1435
From the Top	Excluded	13.8 %	9.7 %	16.7 %	20.6 %	42.1 %

Management Indicators Ranking Report

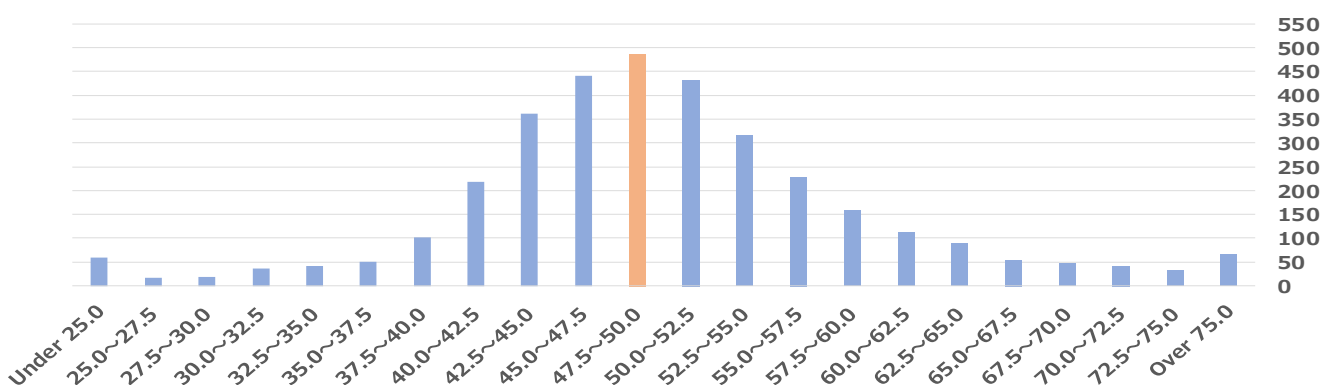
Distribution of All Companies in Major 4 Categories

Based on the data as of Nov. 2019
Dec. 6, 2019
Spring Capital Co., Ltd.

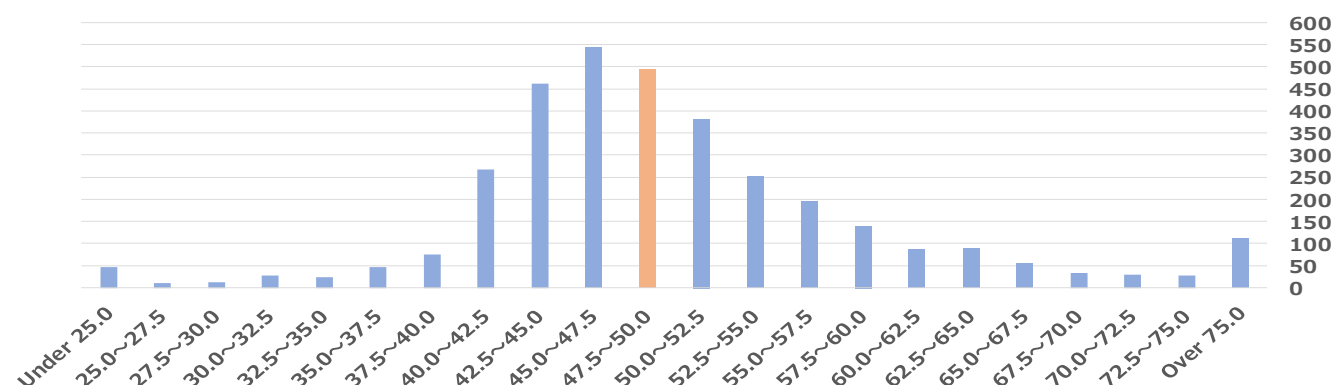
Growth Potential 3408 Companies in 29 Sectors Distribution Chart (Orange: the Company) (right: no. of companies)



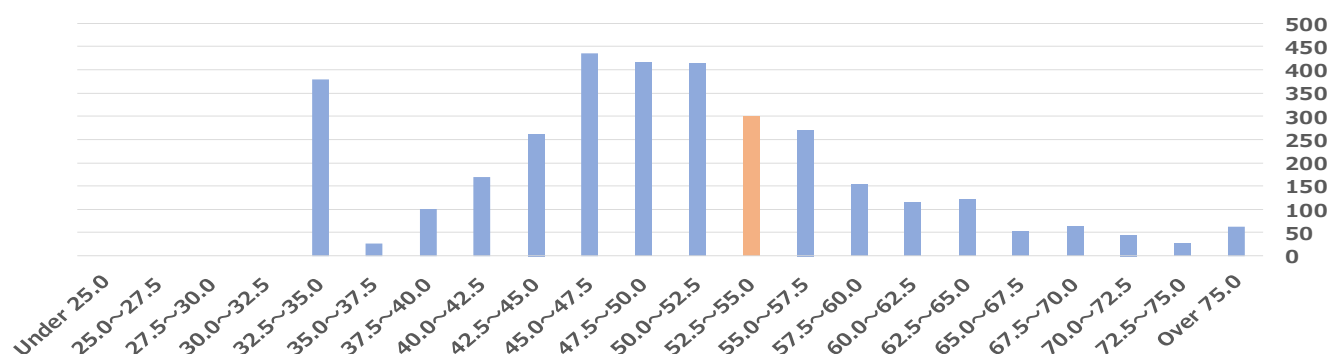
Asset & Capital Profitability 3408 Companies in 29 Sectors Distribution Chart (Orange: the Company) (right: no. of companies)



Sales Profitability 3408 Companies in 29 Sectors Distribution Chart (Orange: the Company) (right: no. of companies)



Sound Dividend Payout Ratio 3408 Companies in 29 Sectors Distribution Chart (Orange: the Company) (right: no. of companies)

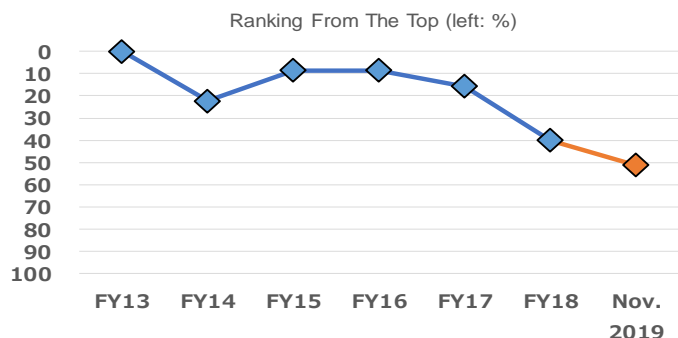
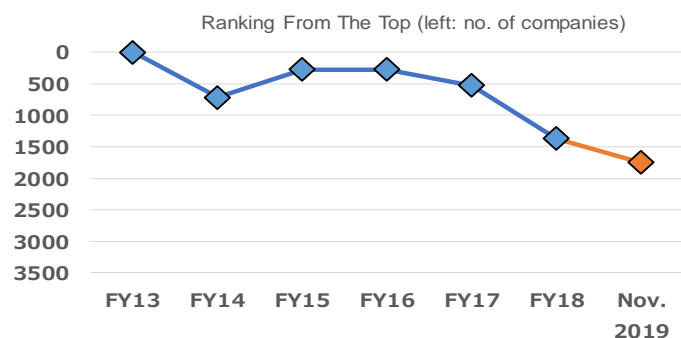


Management Indicators Ranking Report

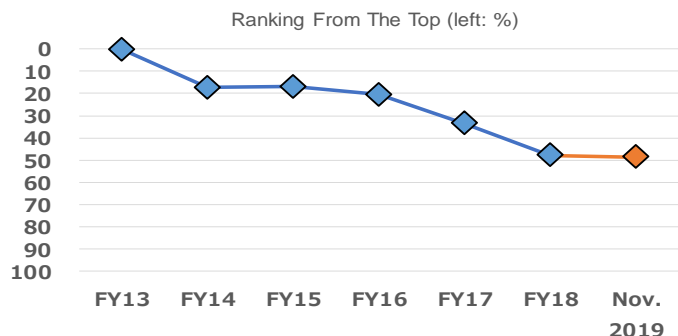
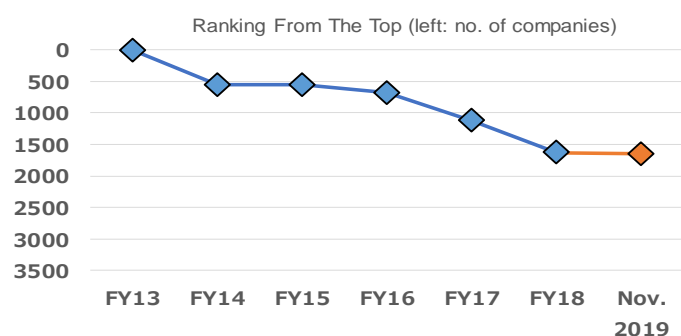
Historical Ranking of Major 4 Categories

Based on the data as of Nov. 2019
Dec. 6, 2019
Spring Capital Co., Ltd.

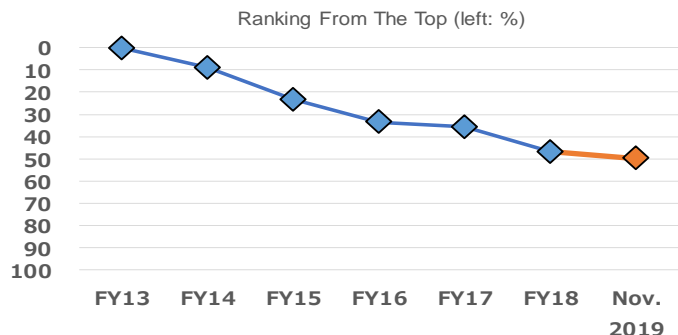
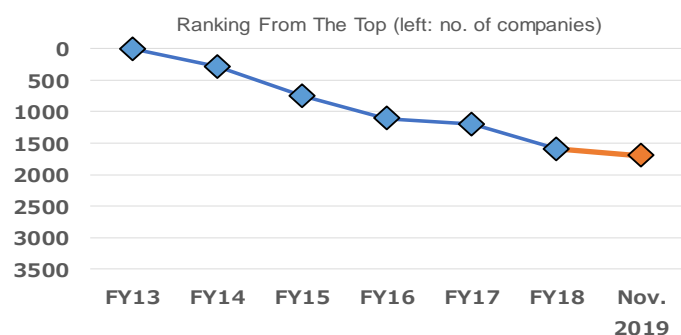
Growth Potential Historical Chart



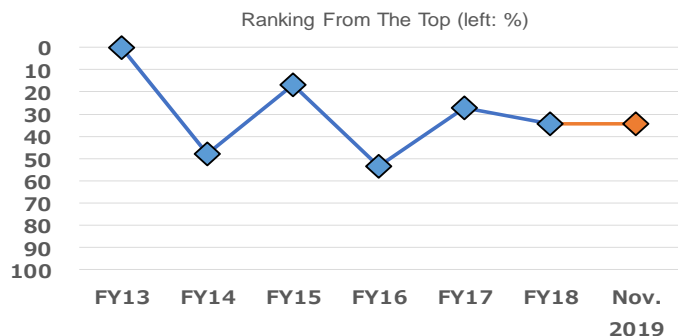
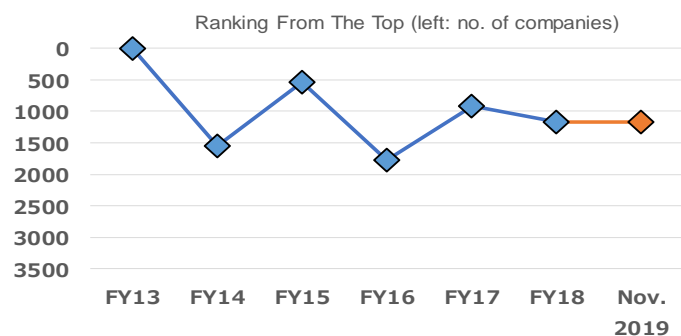
Asset & Capital Profitability Historical Chart



Sales Profitability Historical Chart



Sound Dividend Payout Ratio Historical Chart



Management Indicators Ranking Quintile Chart (All Categories)

	From the Top 80% ~ 100%	From the Top 60% ~ 80%	From the Top 40% ~ 60%	From the Top 20% ~ 40%	From the Top within 20%
【 Overall Management Indicator 】 ...★			★		

【 Major 4 Categories 】 ...☆	From the Top 80% ~ 100%	From the Top 60% ~ 80%	From the Top 40% ~ 60%	From the Top 20% ~ 40%	From the Top within 20%
【 Growth Potential 】			☆		
【 Asset & Capital Profitability 】			☆		
【 Sales Profitability 】			☆		
【 Sound Dividend Payout Ratio 】				☆	

Growth Potential - Intermediate Categories ...●	From the Top 80% ~ 100%	From the Top 60% ~ 80%	From the Top 40% ~ 60%	From the Top 20% ~ 40%	From the Top within 20%
< Minor Categories > ...◎					
(3 terms)					●
< Sales Growth Rate >					◎
< Operating Profit Growth Rate >				◎	
< Recurring Profit Growth Rate >				◎	
< Net Profit Growth Rate >				◎	
(Previous Term)		●			
< Sales Growth Rate >		◎			
< Operating Profit Growth Rate >	◎				
< Recurring Profit Growth Rate >		◎			
< Net Profit Growth Rate >				◎	
(This Term)	●				
< Sales Growth Rate >	◎				
< Operating Profit Growth Rate >	◎				
< Recurring Profit Growth Rate >	◎				
< Net Profit Growth Rate >	◎				

Management Indicators Ranking Quintile Chart (All Categories) Continued

Asset & Capital Profitability - Intermediate Categories ...●	From the Top 80% ~ 100%	From the Top 60% ~ 80%	From the Top 40% ~ 60%	From the Top 20% ~ 40%	From the Top within 20%
< Minor Categories > ...◎					
(ROA)			●		
< ROA 3 Terms >			◎	◎	
< ROA Previous Term >			◎		
< ROA This Term >		◎			
(ROE)			●		
< ROE 3 Terms >			◎	◎	
< ROE Previous Term >			◎		
< ROE This Term >		◎			

Sales Profitability - Intermediate Categories ...●	From the Top 80% ~ 100%	From the Top 60% ~ 80%	From the Top 40% ~ 60%	From the Top 20% ~ 40%	From the Top within 20%
< Minor Categories > ...◎					
(Previous Term)				●	
< Operating Profit ROS >			◎		
< Recurring Profit ROS >				◎	
< Net Profit ROS >			◎		
(This Term)		●			
< Operating Profit ROS >		◎			
< Recurring Profit ROS >		◎			
< Net Profit ROS >		◎			

Sound Dividend Payout Ratio - Intermediate Categories ...●	From the Top 80% ~ 100%	From the Top 60% ~ 80%	From the Top 40% ~ 60%	From the Top 20% ~ 40%	From the Top within 20%
< Minor Categories > ...◎					
(3 terms)			●		
< Dividend Payout Ratio >		◎			
< DOE >				◎	
(Previous Term)				●	
< Dividend Payout Ratio >					◎
< DOE >				◎	

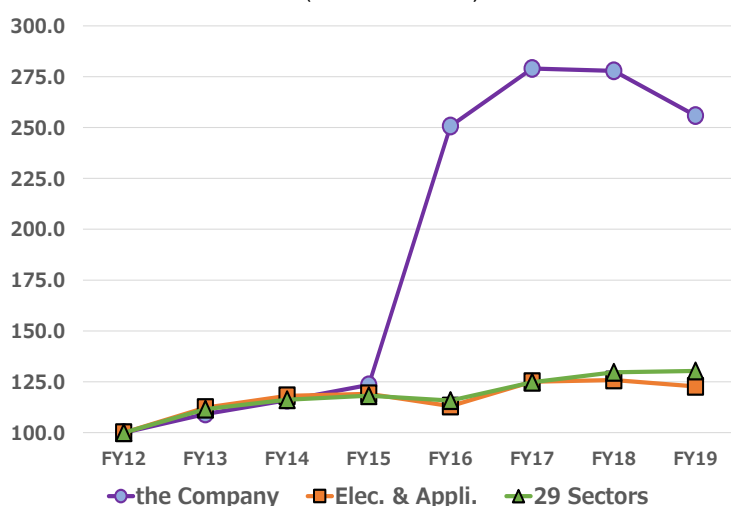
(Reference)

Scoring Average of Sector Management Indicators

	Number of companies	Overall Management Indicator	Ranking	Growth Potential	Ranking	Asset & Capital Profitability	Ranking	Sales Profitability	Ranking	Sound Dividend Payout Ratio	Ranking
Fishery, Agriculture & Forestry	11	47.1	22	48.2	18	47.8	22	47.3	23	48.3	22
Mining	5	51.2	4	54.6	3	48.0	20	54.2	2	46.7	26
Construction	164	50.4	7	50.2	8	51.5	5	49.2	15	50.1	9
Foods	124	48.3	16	48.4	17	48.3	17	47.6	20	50.5	6
Textiles and Apparels	55	44.2	28	44.6	28	44.0	27	46.2	26	48.6	20
Pulp and Paper	26	45.6	27	47.2	23	45.0	26	46.5	25	48.3	21
Chemicals	213	50.4	8	48.6	15	50.3	7	52.2	7	50.9	4
Pharmaceutical	63	45.9	26	48.5	16	42.2	29	48.7	17	48.8	18
Oil and Coal Products	11	50.2	9	49.7	9	51.3	6	49.1	16	50.4	7
Rubber Products	19	47.7	19	45.1	27	49.6	9	50.9	10	48.9	15
Glass and Ceramics Products	56	49.7	10	49.6	10	49.4	10	51.9	8	48.7	19
Iron and Steel	45	46.1	24	47.9	21	46.0	25	47.4	21	47.2	25
Nonferrous Metals	33	46.4	23	45.9	25	48.6	15	47.3	22	48.2	24
Metal Products	92	48.4	15	48.9	12	48.6	14	49.7	14	48.3	23
Machinery	227	50.5	6	48.8	13	50.1	8	52.9	4	50.6	5
Electric Appliances	243	48.2	17	47.2	22	48.3	18	49.9	13	50.0	11
Transportation Equipment	95	45.9	25	45.5	26	47.1	24	46.9	24	48.8	16
Precision Instruments	51	51.0	5	51.4	5	49.3	11	52.5	5	50.1	8
Other Products	108	47.9	18	46.7	24	47.6	23	48.3	19	51.5	1
Electric Power and Gas	24	49.3	11	50.7	7	47.8	21	50.0	12	49.3	14
Land Transportation	66	48.5	13	49.5	11	48.9	13	51.1	9	46.7	27
Marine Transportation	13	40.8	29	41.8	29	42.5	28	45.7	29	44.2	29
Air Transportation	5	48.4	14	48.1	19	52.1	4	50.1	11	45.6	28
Warehousing and Harbor Transportation	39	49.3	12	50.9	6	49.1	12	48.6	18	48.8	17
Information & Communication	411	53.7	3	54.6	2	52.9	3	52.9	3	49.9	12
Wholesale Trade	313	47.7	20	48.8	14	48.0	19	45.8	28	50.0	10
Retail Trade	344	47.3	21	48.0	20	48.4	16	45.9	27	49.3	13
Real Estate	128	56.2	1	55.7	1	55.0	1	55.9	1	51.5	2
Services	424	54.2	2	53.7	4	54.3	2	52.3	6	51.5	3
All Sectors	3408	50.0		50.0		50.0		50.0		50.0	

Growth Potential

Sales (FY2012 = 100)



Sales Change (yoy, %)

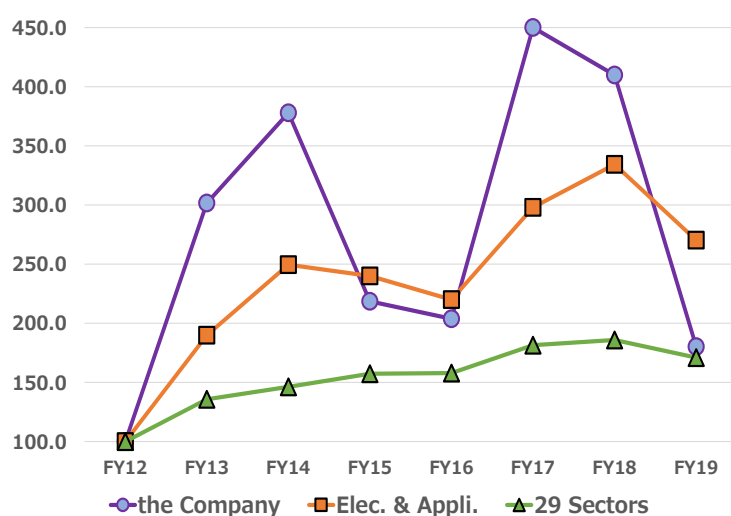
the Company Elec. & Appli. 29 Sectors

FY2013	9.2	12.3	11.5
FY2014	6.2	5.2	4.2
FY2015	6.5	0.9	1.7
FY2016	103.0	-5.1	-2.0
FY2017	11.3	10.6	7.7
FY2018	-0.4	0.7	3.9
FY2019	-7.9	-2.5	0.5

FY2012 – FY2019

7 Term Average	14.4	3.0	3.9
----------------	------	-----	-----

Recurring Profit (FY2012 = 100)



Recurring Profit Change (yoy, %)

the Company Elec. & Appli. 29 Sectors

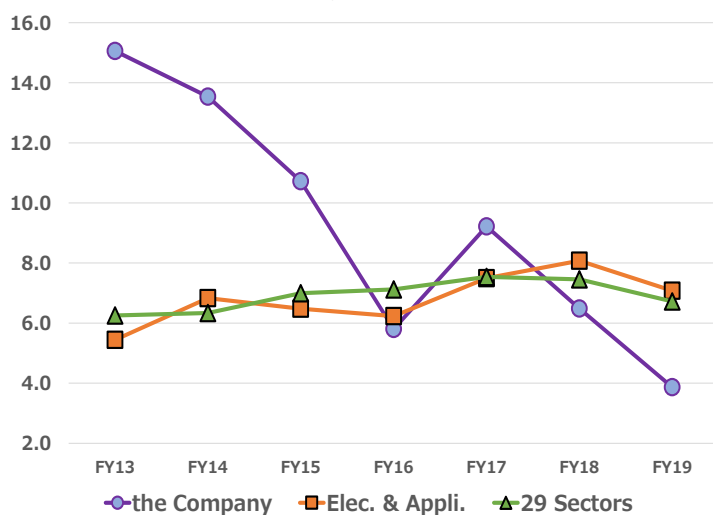
FY2013	201.6	89.8	35.8
FY2014	25.3	31.5	7.7
FY2015	-42.2	-3.8	7.6
FY2016	-6.7	-8.4	0.4
FY2017	120.8	35.4	14.9
FY2018	-8.9	12.2	2.5
FY2019	-56.0	-19.1	-8.1

FY2012 – FY2019

7 Term Average	8.8	15.3	8.0
----------------	-----	------	-----

Sales Profitability

Operating Profit ROS (%)



Operating Profit ROS (%)

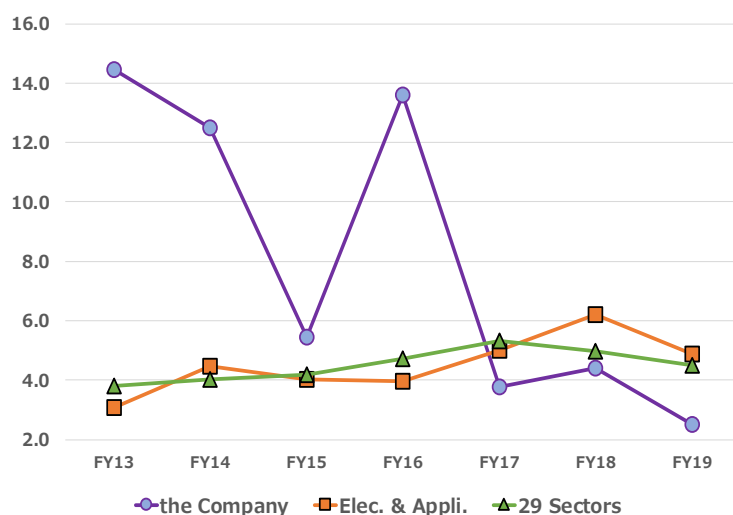
the Company Elec. & Appli. 29 Sectors

FY2013	15.1	5.4	6.3
FY2014	13.5	6.8	6.3
FY2015	10.7	6.5	7.0
FY2016	5.8	6.2	7.1
FY2017	9.2	7.5	7.5
FY2018	6.5	8.1	7.5
FY2019	3.9	7.1	6.7

FY2013 – FY2019

7 Term Average	9.2	6.8	6.9
----------------	-----	-----	-----

Net Profit ROS (%)

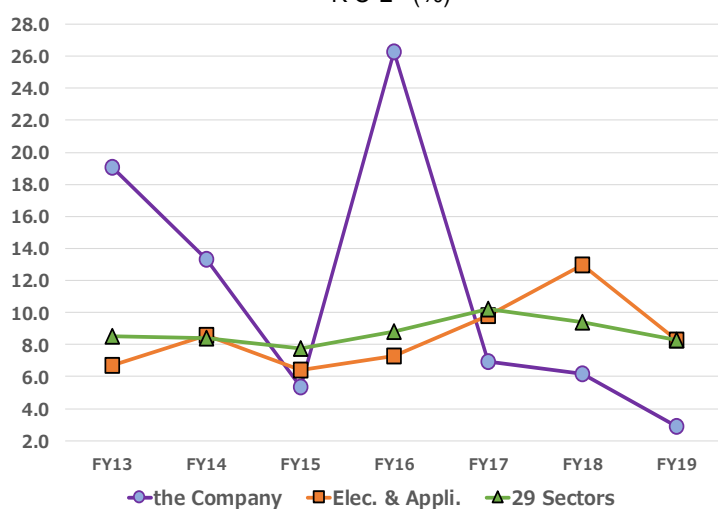


Net Profit ROS (%)

	the Company	Elec. & Appli.	29 Sectors
FY2013	14.5	3.1	3.8
FY2014	12.5	4.5	4.0
FY2015	5.5	4.0	4.2
FY2016	13.6	4.0	4.7
FY2017	3.8	5.0	5.3
FY2018	4.4	6.2	5.0
FY2019	2.5	4.9	4.5
FY2013 – FY2019 7 Term Average	8.1	4.5	4.5

ROE

ROE (%)

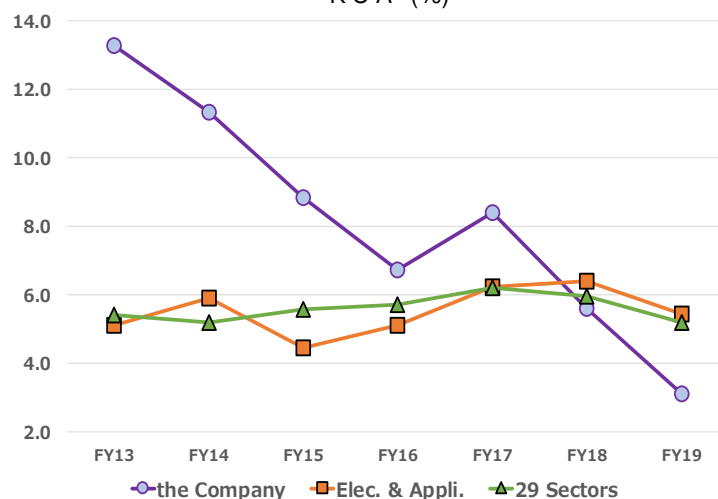


ROE (%)

	the Company	Elec. & Appli.	29 Sectors
FY2013	19.1	6.7	8.5
FY2014	13.3	8.6	8.4
FY2015	5.3	6.4	7.8
FY2016	26.3	7.3	8.8
FY2017	7.0	9.8	10.2
FY2018	6.2	13.0	9.4
FY2019	2.9	8.3	8.3
FY2013 – FY2019 7 Term Average	11.4	8.6	8.8

ROA

ROA (%)



ROA (%)

	the Company	Elec. & Appli.	29 Sectors
FY2013	13.3	5.1	5.4
FY2014	11.3	5.9	5.2
FY2015	8.8	4.4	5.6
FY2016	6.7	5.1	5.7
FY2017	8.4	6.2	6.2
FY2018	5.6	6.4	6.0
FY2019	3.1	5.4	5.2
FY2013 – FY2019 7 Term Average	8.2	5.5	5.6

Simplified Fact Sheet

Valuation Data, Profitability Indicators and Ranking

Dec. 6, 2019

Spring Capital Co., Ltd.

Valuation and Market Data as of Dec. 6, 2019

Closing Price	1,477	Year High	1,527	11/26/2019
PER (estimated)	29.26	Year Low	982	5/21/2019
PER (actual)	15.34	6-Month % Change	32.9 %	(TOPIX) 12.4 %
PBR (actual)	0.85	12-Month % Change	3.5 %	(TOPIX) 6.4 %
Dividend Yield (actual)	2.57 %	12-Month Historical Volatility	42.9 %	(TOPIX) 15.7 %
EV/EBITDA	3.36			
PSR (forecast)	0.73			
PSR (actual)	0.67			

Profitability Indicators and All-Company Rankings Based on Business Results Announced by the Company
(29 sectors excluding financials) (calculated by Spring)

Fiscal Year		2014	2015	2016	2017	2018	2019
Accounting Period		2015/03	2016/03	2017/03	2018/03	2019/03	2020/03
		Actual	Actual	Actual	Actual	Actual	Est.
No. of Companies		3363	3443	3467	3512	3512	3556
Sales	Y mil	9,971	10,621	21,559	23,996	23,896	22,000
Ranking		2507	2499	1951	1887	1944	2004
Operating Profit	Y mil	1,350	1,139	1,251	2,212	1,550	850
Ranking		1640	1845	1813	1477	1718	2141
Recurring Profit	Y mil	1,678	970	905	1,998	1,820	800
Ranking		1540	1951	2053	1571	1638	2194
Net Profit	Y mil	1,247	580	2,930	902	1,049	550
Ranking		1405	1912	978	1836	1680	2120

* Percentage from the Top is not calculated for this section to exclude company size effects.

Operating Profit ROS	%	13.5	10.7	5.8	9.2	6.5	3.9
All Companies	%	5.7	6.2	6.7	7.3	7.2	6.7
Ranking		344	613	1587	901	1409	2157
Percentage from the Top	%	10.2	17.8	45.8	25.7	40.1	60.7
Recurring Profit ROS	%	16.8	9.1	4.2	8.3	7.6	3.6
All Companies	%	5.9	6.2	6.7	7.4	7.2	6.8
Ranking		243	845	2081	1082	1217	2243
Percentage from the Top	%	7.2	24.5	60.0	30.8	34.7	63.1
Net Profit ROS	%	12.5	5.5	13.6	3.8	4.4	2.5
All Companies	%	3.6	3.6	4.3	5.2	4.9	4.4
Ranking		201	971	194	1754	1457	2165
Percentage from the Top	%	6.0	28.2	5.6	49.9	41.5	60.9

Simplified Fact Sheet

ROE / ROA / Dividend Payout Ratio / DOE / Ranking

Dec. 6, 2019

Spring Capital Co., Ltd.

ROE, ROA, Dividend Payout Ratio, and DOE Indicators and Rankings Based on Business Results Announced by the Company
(29 sectors excluding financials) (calculated by Spring)

Fiscal Year		2014	2015	2016	2017	2018	2019
Accounting Period		2015/03	2016/03	2017/03	2018/03	2019/03	2020/03
		Actual	Actual	Actual	Actual	Actual	Est.
ROE	%	13.3	5.3	26.3	7.0	6.2	2.9
29 Sectors	%	8.4	7.8	8.8	10.2	9.4	8.3
Ranking		624	2072	146	1984	2065	2791
No. of Companies		3340	3421	3438	3493	3507	3546
Percentage from the Top	%	18.7	60.6	4.2	56.8	58.9	78.7

* ROE is an important indicator, calculated as net profit / equity (= shareholders' equity), that measures the final profit secured using shareholders' equity.

As the average of term-end equity of 2 terms is used as the denominator, companies posting zero or negative equity during the relevant terms are excluded.

ROE for the latest quarter is calculated using estimated net profit for this term and shareholders' equity as of the end of the previous term and of the latest quarter.

ROA	%	11.3	8.8	6.7	8.4	5.6	3.1
29 Sectors	%	5.2	5.6	5.7	6.2	6.0	5.2
Ranking		486	877	1383	1045	1744	2497
No. of Companies		3355	3427	3450	3540	3512	3556
Percentage from the Top	%	14.5	25.6	40.1	29.5	49.7	70.2

* ROA is calculated as Earnings before Interest and Taxes (operating profit + interest revenue + dividend income and interest on securities) / total assets. It is justifiable for a company to expand its business by financial leverage using debt, if the company's ROA exceeds the company's financing cost (e.g. cost of issuing 10-year corporate bonds = 2%).

Interest coverage ratio shown on P11 indicates the ratio of Earnings before Interest and Taxes to financial expenses (interest and discount expenses), with 10 times regarded as ideal.

If the interest coverage ratio holds a sufficient level with a high ROA and Profit Ratio of Sales, a company has no problem in financing aggressively.

As the average of term-end equity of 2 terms is used as the denominator, companies unable to be measured with the same standard are excluded.

ROA for the latest quarter is calculated using estimated operating profit for this term and total assets as of the end of the previous term and of the latest quarter.

Dividend Payout Ratio	%	23.3	58.6	10.4	37.8	40.5	
29 Sectors	%	31.2	33.8	30.1	27.4	32.4	
Ranking		1510	197	2512	509	573	
No. of Companies		3220	3238	3438	3525	3579	
Percentage from the Top	%	46.9	6.1	73.1	14.4	16.0	

* Dividend Payout Ratio is calculated as total dividend / net profit. It should be noted that it may differ from the figure announced by the companies calculated from profit per share according to the accounting principle.

Data for total annual dividend exceeding net profit and dividend of unprofitable companies are excluded from the rankings.

DOE	%	3.1	3.1	2.7	2.6	2.5	
29 Sectors	%	2.5	2.7	2.8	2.9	3.0	
Ranking		542	602	907	936	1172	
No. of Companies		3220	3238	3438	3493	3507	
Percentage from the Top	%	16.8	18.6	26.4	26.8	33.4	

* DOE, calculated as ROE times the dividend payout ratio, can be called the "true dividend payout ratio", and is closely tracked by global investors.

Its inverse (1 / DOE) equals the period (year) to recover shareholders' equity via the dividend.

As the average of term-end equity of two terms is used as the denominator, companies posting zero or negative equity during the relevant terms are excluded.

Simplified Fact Sheet

Dec. 6, 2019

Review of Financial Indicators and Financial Soundness based on Business Results

Spring Capital Co., Ltd.

Management Indicators, Cash Flow, and Financial Indicators Calculated by Spring based on Business Results Announced by the Company (million yen, %, multiple)

Fiscal Year Accounting Period		2014 2015/03	2015 2016/03	2016 2017/03	2017 2018/03	2018 2019/03	Latest Quarter
Data Source		Securities Report	Securities Report	Securities Report	Securities Report	Securities Report	Financial Results
Current Ratio	%	570.1	666.9	296.1	316.0	320.5	337.2
Fixed Assets Ratio	%	22.3	19.8	57.2	43.6	43.3	44.2
Equity Ratio	%	82.3	83.9	45.3	51.8	69.0	71.4
Debt Ratio	%	21.0	18.8	84.1	61.4	44.6	40.1
D/E Ratio	%	1.2	0.1	54.4	34.9	24.1	21.9
Interest Coverage Ratio	Multiple	452.0	1,154.0	31.3	69.9	52.6	Calc. only year-end
Financial Leverage	Multiple	1.2	1.2	2.2	1.9	1.4	1.4
CF from Operating Activities	Y mil	1,736	1,302	1,635	2,335	2,699	
CF from Investing Activities	Y mil	-1,412	-169	2,714	-697	-3,256	
CF from Financing Activities	Y mil	290	-422	-994	1,151	-928	
(Cash and Cash Equivalents)	Y mil	(6,478)	(6,855)	(9,714)	(12,280)	(10,883)	
(EBITDA)	Y mil	(2,085)	(1,412)	(2,165)	(2,964)	(2,935)	

Review of Financial Soundness as of Dec. 6, 2019

Comparison with average data of all companies in the TSE 29 industrial sectors (excluding 4 financial sectors) and with the sector

		A 29 sectors	B Sector	Standard Criterion	Standard Value	Desirable Value	The Company	Result
Current Ratio	%	145.8	157.7	Lower of A or B	145.8	Higher	337.2	Positive
Fixed Assets Ratio	%	143.0	126.5	Higher of A or B	143.0	Lower	44.2	Positive
Equity Ratio	%	40.6	41.3	Lower of A or B	40.6	Higher	71.4	Positive
Debt Ratio	%	139.7	133.7	Higher of A or B	139.7	Lower	40.1	Positive
D/E Ratio	%	142.5	129.1	Higher of A or B	142.5	Lower	21.9	Positive

Corporate Information as of Dec. 6, 2019

Ticker Code	6616		
Company Name	TOREX SEMICONDUCTOR LTD.		
Head Office	3F Unizo Shinkawa Eitai Dori Bldg., 1-24-1 Shinkawa, Chuo-ku, Tokyo 104-0033 JAPAN		
Stock Listings	The Tokyo Stock Exchange, First Section		
TSE Industrial Sector	Electric Appliances		
Investment Unit	100 shares		
Minimum Investment	147,700	President	Koji Shibamiya
Date of Listing	4/8/2014	Paid-in Capital	2,967 mil yen
Date of Establishment	3/31/1995	Market Capitalization	17,066 mil yen ranked 1,961 of 3,791 companies
Accounting Period	March	25-Day Average Trading Value	56 mil yen ranked 1,785 of 3,791 companies
Floating Stock Ratio	20.9%	Market Cap as of March-end 2019	13,888 mil yen ranked 2,061 of 3,760 companies
Major Shareholder Ownership	56.5%	Average Trading Value in FY2018	153 mil yen ranked 1,360 of 3,760 companies

Disclaimers

- This report has been prepared under a contract between TOREX SEMICONDUCTOR LTD. (hereinafter, the "Company") and Spring Capital Co., Ltd. (hereinafter, "SC") by SC. In the contract, the Company has consented that SC prepare this report based entirely upon the standards of SC only and excluding any intervention by the Company on all items, including the qualitative information, the management indicators adopted in the Management Indicator Ranking, and the classification of business sectors (or the Company's business sector) chosen for the comparison report.
- This report has been prepared for the purpose of companies to monitor objectively prepared rankings of management indicators, and is not aimed at soliciting investment. Therefore, investment decisions or activities should be made or done solely based on the investors' judgements, and the Company and SC are not responsible for any investment or consequence.
- SC has not placed a restriction on the Company regarding the distribution of this report, but all intellectual property rights, including the copyright of the Management Indicator Ranking and all the data associated with the comparison report, belong to SC. Consequently, persons such as the readers of this report are strictly prohibited from the publishing, reproducing, disclosing, etc., of materials including this report and the data in this report (including via electronic media) without SC's permission.

Disclaimers on Overall Management Indicator

- "All sectors" in this report refer to the 29 sectors that remain when the four financial sectors (Banks, Securities and Commodity Futures, Insurance, and Other Financials), which use different accounting standards, are excluded from the 33 sectors as defined by the Tokyo Stock Exchange, and consist of all companies whose common shares were listed on the Japanese stock market as of the end of March 2019. Since calculations of the Growth Potential, the ROA, the ROE, and other items use figures of full-year financial results for the most recent four fiscal years, the ranking excludes companies that had not released full-year financial results and companies that had posted zero or negative equity at least once during the four-year period, as well as companies whose disclosed full-year financial results could not be recalculated into reasonable figures based on the Japanese GAAP and companies that had not been able to disclose the FY 2018 financial results by May 20, 2019. A total of 3,408 companies have been analyzed in the ranking.
- The numbers for FY 2019 used in this report have been adopted from one of the following sources in the order of decreasing priority: (1) the numbers in a company's disclosed financial results; (2) a company's forecast; or (3) the estimates by SC. In this current report based on November 2019 data, SC's estimates for FY 2019 have been used for 48 companies.
- Going forward, the reports for FY 2019 are planned to be prepared on a quarterly basis following the announcements of quarterly results by the companies whose accounting period ends in March. Reports based on the values available as of February 2020 will be issued the following month. The finalized report for FY 2019 will be based on the values available as of May 2020 and will be issued the following month.
- The Overall Management Indicator (as scored by SC) in this report represents an overall score for the major categories (Growth Potential, Asset & Capital Profitability, Sales Profitability, and Sound Dividend Payout Ratio). The weighting for each category is 30%, 25%, 20%, and 25%, respectively.
- The intermediate and minor categories that compose each of the major categories are described on P4 and P5. For the minor categories, extreme values have been adjusted so that the highest and the lowest deviation values are 80 and 20, respectively. For the intermediate and major categories, no adjustment has been made since SC scored both categories based on the minor categories, but the average SC score for the major categories is 50 due to the repeated processing to seek deviation values.
- On P7-P8, a comparison is made on the Growth Potential, Sales Profitability, ROE, and ROA with 29 business sectors and with the Company's sector as defined by the Tokyo Stock Exchange. The figures for ROE and ROA used in the comparison match those on P10. However, for the Growth Potential and the Sales Profitability, the figures do not match those on P9. This difference is due to the fact that, for the purpose of comparing the Growth Potential over the long term, the target companies for the comparison report have been limited to only those in the 29 business sectors and the Company's sector (as defined by the Tokyo Stock Exchange) that have continuously announced their full-year financial results from FY 2010 to FY 2018. The modification of the universe for the comparison of the Growth Potential is conducted every year in the finalized ranking report for the previous fiscal year based on the values available as of May.
- The data in this report on corporate financial results are owned by SC, and a part of the data has been verified for greater accuracy with information vendors with whom SC has a contract. However, SC does not guarantee integrity of its data. The content of this report was relevant as of the time of its preparation and may change without prior notice.