

Overall Management Indicator

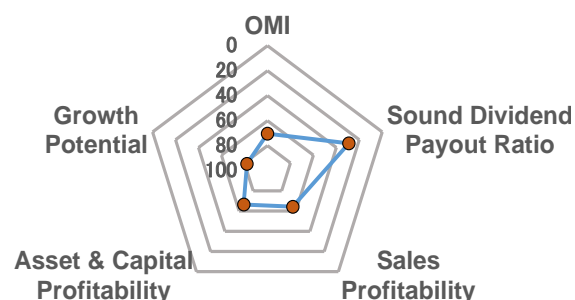
Spring Capital Co., Ltd.

(All 29 sectors)	Score	From the Top	Ranking	Score (50 as average in all companies)				
				30	40	50	60	70
Overall Management Indicator (OMI)	46.1	70.4 %	2369 among 3366	*****	*****	*****		

Major 4 Categories Composing "Overall Management Indicator"

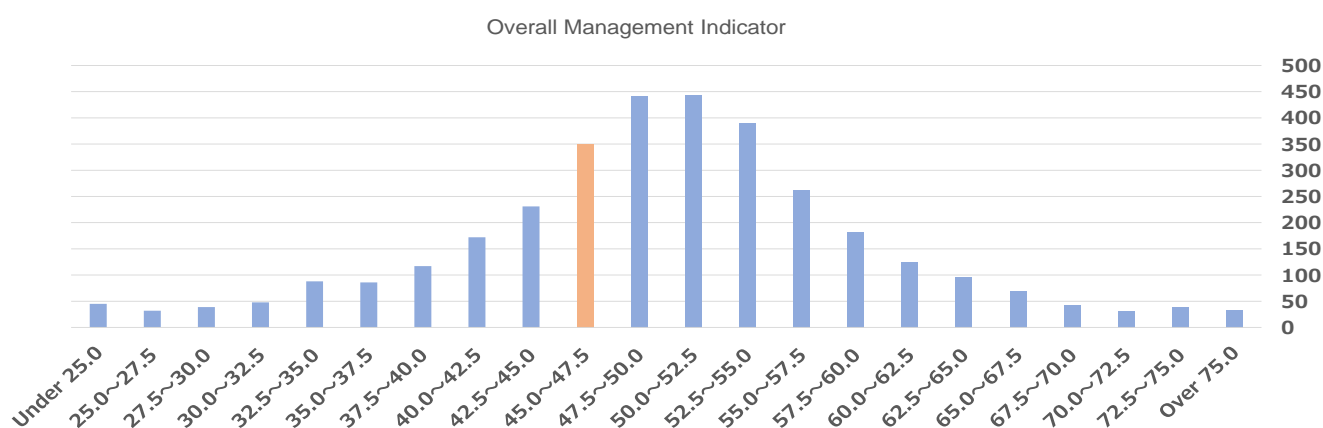
	Score	From the Top	Ranking	Score (50 as average in all companies)				
				30	40	50	60	70
Growth Potential	41.6	82.1 %	2763 among 3366	*****	*****			
Asset & Capital Profitability	46.7	66.5 %	2239 among 3366	*****	*****			
Sales Profitability	47.0	64.3 %	2165 among 3366	*****	*****			
Sound Dividend Payout Ratio	54.3	29.1 %	980 among 3366	*****	*****	*****		

(In the Sector)	Score	From the Top	Ranking
Overall Management Indicator	46.1	73.5 %	169 among 230
Growth Potential	41.6	80.0 %	184 among 230
Asset & Capital Profitability	46.7	67.0 %	154 among 230
Sales Profitability	47.0	69.6 %	160 among 230
Sound Dividend Payout Ratio	54.3	30.4 %	70 among 230

 ... Within the Top 30%

Overall Management Indicator 3366 Companies in 29 Sectors Distribution Chart (Orange: the Company)

(right axis: no. of companies)



Overall Management Indicator Historical Ranking / Percentage from the Top

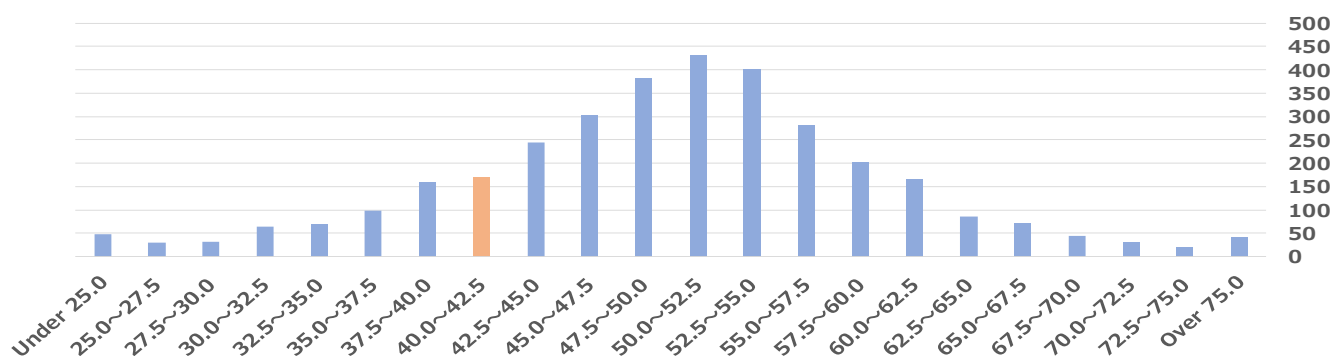
Accounting Period	FY2014	FY2015	FY2016	FY2017	FY2018	FY2019
Reference Date	May 2015	May 2016	May 2017	May 2018	May 2019	May 2020
No. of companies	3220	3238	3326	3372	3408	3366
Ranking	445	315	554	695	1435	2269
From the Top	13.8 %	9.7 %	16.7 %	20.6 %	42.1 %	67.4 %

Management Indicators Ranking Report

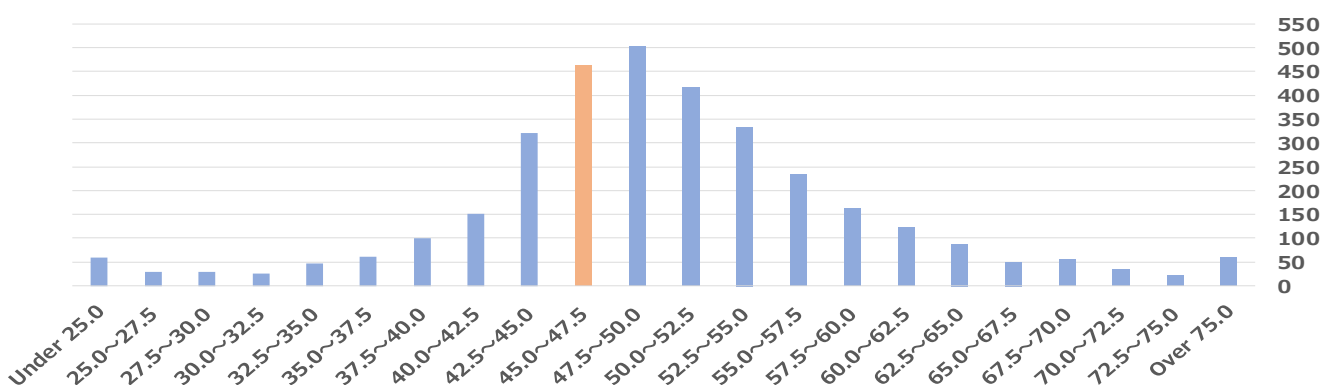
Distribution of All Companies in Major 4 Categories

Based on the data as of Nov. 2020
Dec. 9, 2020
Spring Capital Co., Ltd.

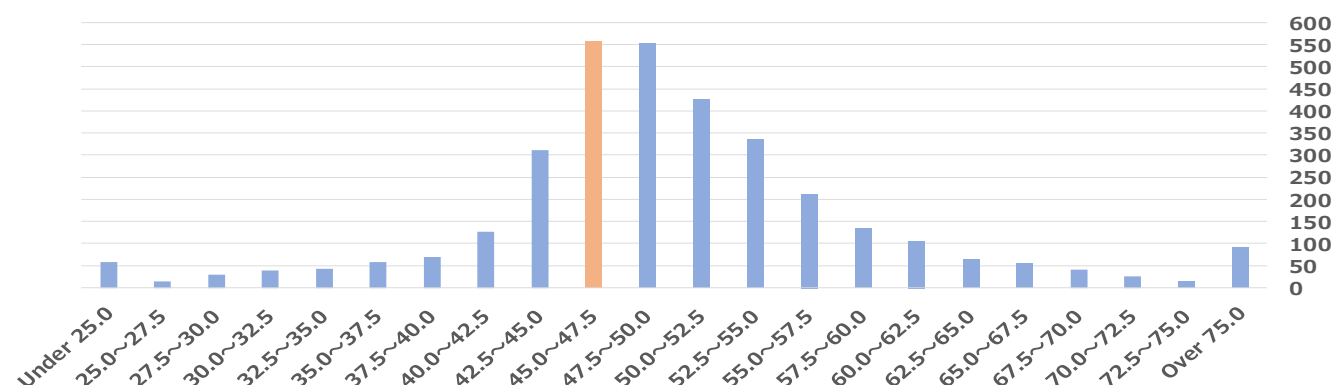
Growth Potential 3366 Companies in 29 Sectors Distribution Chart (Orange: the Company) (right: no. of companies)



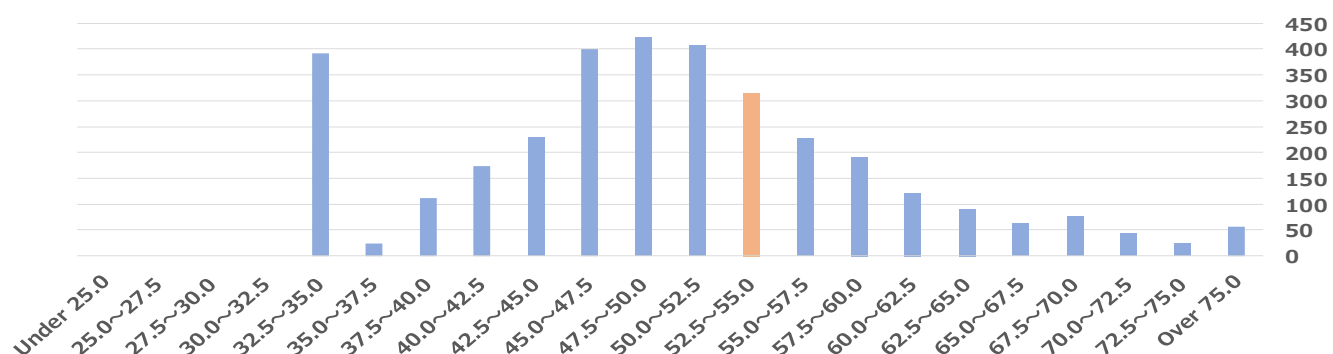
Asset & Capital Profitability 3366 Companies in 29 Sectors Distribution Chart (Orange: the Company) (right: no. of companies)



Sales Profitability 3366 Companies in 29 Sectors Distribution Chart (Orange: the Company) (right: no. of companies)



Sound Dividend Payout Ratio 3366 Companies in 29 Sectors Distribution Chart (Orange: the Company) (right: no. of companies)

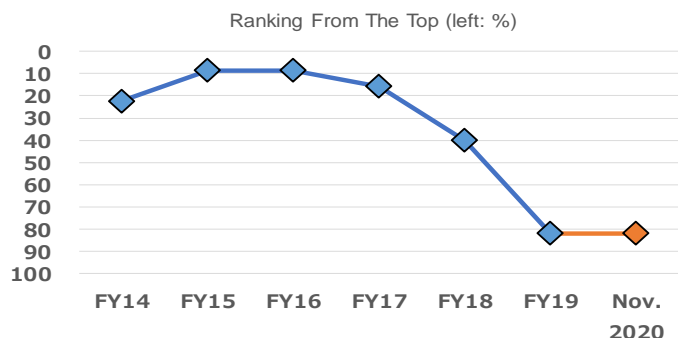
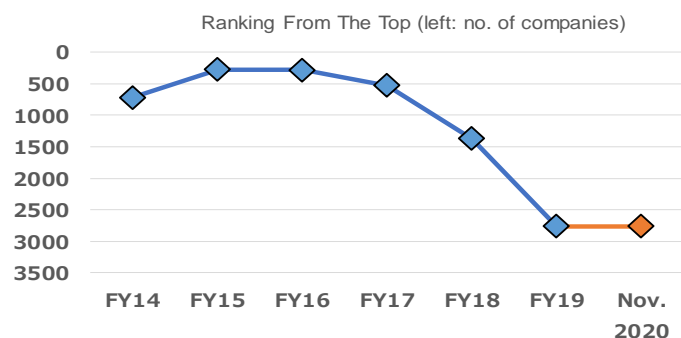


Management Indicators Ranking Report

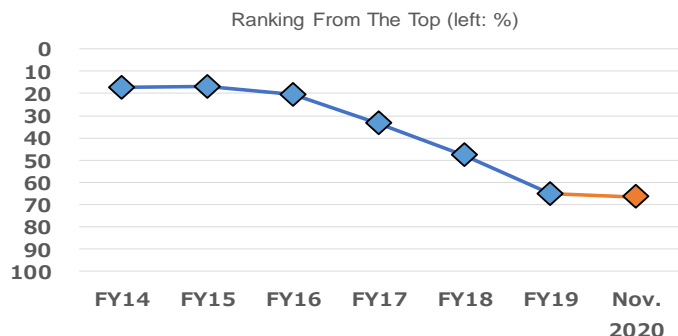
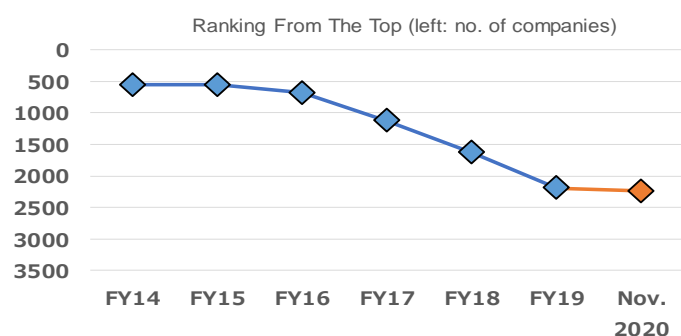
Historical Ranking of Major 4 Categories

Based on the data as of Nov. 2020
Dec. 9, 2020
Spring Capital Co., Ltd.

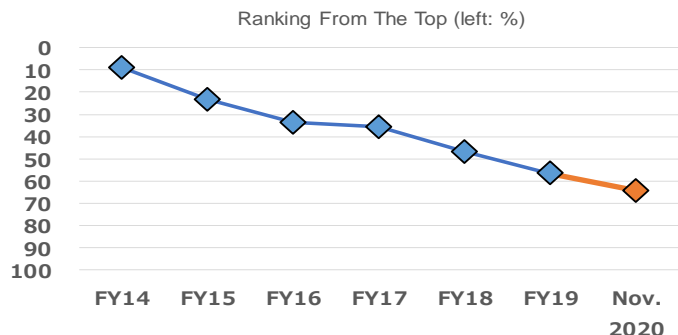
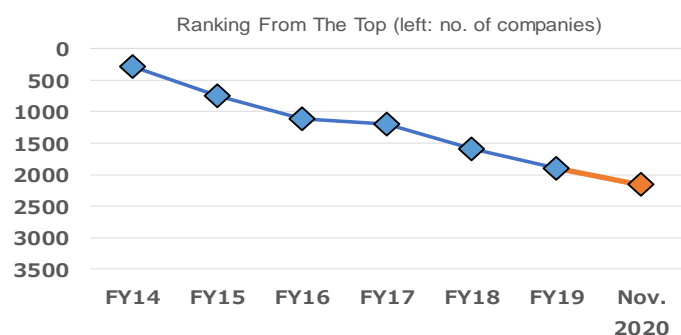
Growth Potential Historical Chart



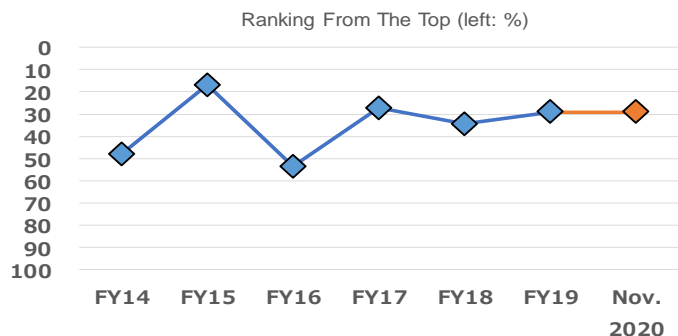
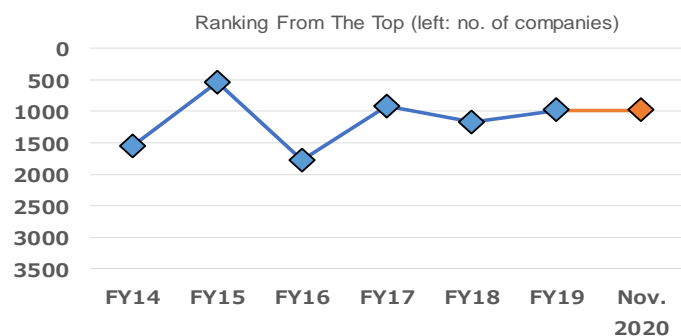
Asset & Capital Profitability Historical Chart



Sales Profitability Historical Chart



Sound Dividend Payout Ratio Historical Chart



Management Indicators Ranking Quintile Chart (All Categories)

	From the Top 80% ~ 100%	From the Top 60% ~ 80%	From the Top 40% ~ 60%	From the Top 20% ~ 40%	From the Top within 20%
【 Overall Management Indicator 】 ...★		★			

【 Major 4 Categories 】 ...☆	From the Top 80% ~ 100%	From the Top 60% ~ 80%	From the Top 40% ~ 60%	From the Top 20% ~ 40%	From the Top within 20%
【 Growth Potential 】	☆				
【 Asset & Capital Profitability 】		☆			
【 Sales Profitability 】		☆			
【 Sound Dividend Payout Ratio 】				☆	

Growth Potential - Intermediate Categories ...●	From the Top 80% ~ 100%	From the Top 60% ~ 80%	From the Top 40% ~ 60%	From the Top 20% ~ 40%	From the Top within 20%
< Minor Categories > ...◎					
(3 terms)	●				
< Sales Growth Rate >		◎			
< Operating Profit Growth Rate >	◎				
< Recurring Profit Growth Rate >		◎			
< Net Profit Growth Rate >	◎				
(Previous Term)	●				
< Sales Growth Rate >	◎				
< Operating Profit Growth Rate >	◎				
< Recurring Profit Growth Rate >	◎				
< Net Profit Growth Rate >	◎				
(This Term)				●	
< Sales Growth Rate >					◎
< Operating Profit Growth Rate >			◎		
< Recurring Profit Growth Rate >		◎			
< Net Profit Growth Rate >			◎		

Management Indicators Ranking Quintile Chart (All Categories) Continued

Asset & Capital Profitability - Intermediate Categories ...●	From the Top 80% ~ 100%	From the Top 60% ~ 80%	From the Top 40% ~ 60%	From the Top 20% ~ 40%	From the Top within 20%
< Minor Categories > ...◎					
(ROA)		●			
< ROA 3 Terms >			◎		
< ROA Previous Term >		◎			
< ROA This Term >		◎			
(ROE)		●			
< ROE 3 Terms >		◎			
< ROE Previous Term >		◎			
< ROE This Term >		◎			

Sales Profitability - Intermediate Categories ...●	From the Top 80% ~ 100%	From the Top 60% ~ 80%	From the Top 40% ~ 60%	From the Top 20% ~ 40%	From the Top within 20%
< Minor Categories > ...◎					
(Previous Term)		●			
< Operating Profit ROS >		◎			
< Recurring Profit ROS >		◎			
< Net Profit ROS >		◎			
(This Term)		●			
< Operating Profit ROS >		◎			
< Recurring Profit ROS >		◎			
< Net Profit ROS >		◎			

Sound Dividend Payout Ratio - Intermediate Categories ...●	From the Top 80% ~ 100%	From the Top 60% ~ 80%	From the Top 40% ~ 60%	From the Top 20% ~ 40%	From the Top within 20%
< Minor Categories > ...◎					
(3 terms)					●
< Dividend Payout Ratio >					◎
< DOE >				◎	
(Previous Term)			●		
< Dividend Payout Ratio >			◎		
< DOE >				◎	

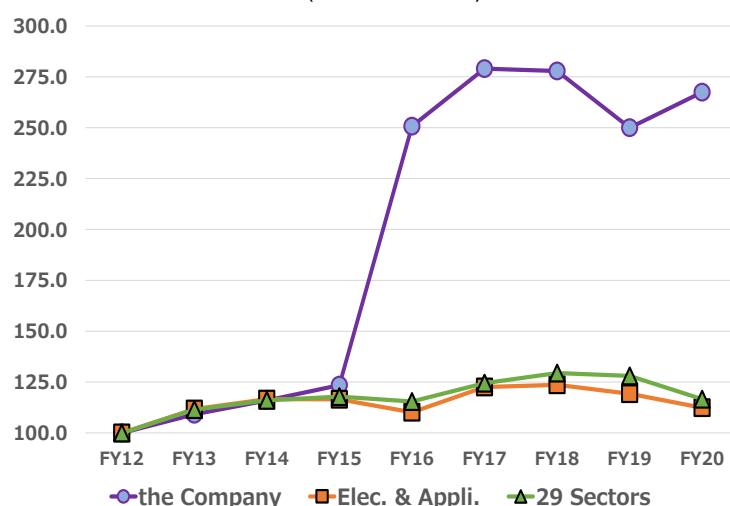
(Reference)

Scoring Average of Sector Management Indicators

	Number of companies	Overall Management Indicator	Ranking	Growth Potential	Ranking	Asset & Capital Profitability	Ranking	Sales Profitability	Ranking	Sound Dividend Payout Ratio	Ranking
Fishery, Agriculture & Forestry	11	49.4	11	52.4	5	48.7	15	49.5	16	47.2	24
Mining	6	47.9	19	47.5	19	48.5	16	52.8	3	46.2	27
Construction	161	51.9	4	52.4	6	52.1	4	50.3	12	50.5	10
Foods	123	49.5	10	49.8	11	48.9	13	49.0	18	50.6	8
Textiles and Apparels	54	43.6	27	44.1	25	43.5	28	45.1	27	48.6	17
Pulp and Paper	25	47.9	20	50.6	9	46.7	22	49.3	17	47.0	26
Chemicals	207	50.7	6	48.6	14	50.3	5	52.4	4	51.4	4
Pharmaceutical	61	48.7	14	53.6	4	43.7	27	50.3	11	48.0	21
Oil and Coal Products	11	45.4	24	41.4	28	46.5	23	47.1	23	52.5	1
Rubber Products	15	48.0	18	44.6	24	49.8	7	50.0	14	50.6	7
Glass and Ceramics Products	56	48.9	13	48.4	15	49.4	9	51.3	7	48.1	20
Iron and Steel	45	44.7	25	44.6	23	46.0	24	47.4	20	47.0	25
Nonferrous Metals	31	45.8	23	44.7	22	47.7	19	47.1	24	48.5	19
Metal Products	90	48.2	17	48.3	17	48.8	14	50.3	13	47.7	22
Machinery	218	49.1	12	45.9	21	49.8	8	51.2	8	51.6	3
Electric Appliances	230	49.5	9	49.0	13	49.0	12	50.4	10	50.6	9
Transportation Equipment	85	44.1	26	41.9	27	45.9	25	45.8	25	49.6	13
Precision Instruments	48	50.2	7	50.4	10	49.3	10	51.6	6	49.7	12
Other Products	106	48.5	15	47.6	18	47.6	20	48.6	19	51.9	2
Electric Power and Gas	24	51.4	5	54.2	2	49.0	11	51.9	5	48.6	16
Land Transportation	64	46.1	22	46.0	20	48.3	18	47.2	21	47.4	23
Marine Transportation	12	41.5	28	43.9	26	43.2	29	44.5	28	43.3	28
Air Transportation	5	39.3	29	40.3	29	45.6	26	39.9	29	42.4	29
Warehousing and Harbor Transportation	38	49.8	8	50.6	8	49.9	6	49.7	15	48.9	15
Information & Communication	433	54.1	2	55.7	1	53.3	3	53.3	2	49.4	14
Wholesale Trade	306	48.5	16	49.3	12	48.4	17	47.1	22	50.2	11
Retail Trade	330	46.8	21	48.4	16	47.4	21	45.8	26	48.6	18
Real Estate	130	54.8	1	53.9	3	54.3	1	55.1	1	51.3	6
Services	441	52.7	3	52.1	7	53.4	2	51.1	9	51.3	5
All Sectors	3366	50.0		50.0		50.0		50.0		50.0	

Growth Potential

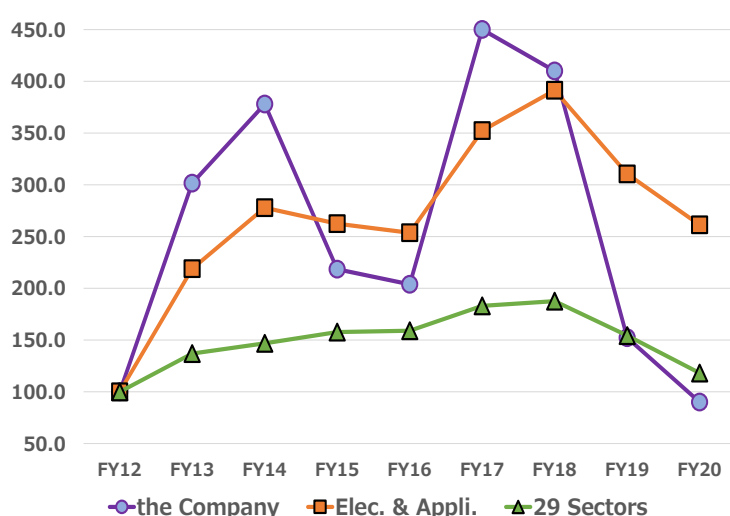
Sales (FY2012 = 100)



Sales Change (yoy, %)

	the Company	Elec. & Appli.	29 Sectors
FY2013	9.2	11.7	11.5
FY2014	6.2	4.3	4.0
FY2015	6.5	-0.0	1.6
FY2016	103.0	-5.5	-2.1
FY2017	11.3	11.3	7.8
FY2018	-0.4	0.9	4.0
FY2019	-10.0	-3.6	-1.1
FY2020	7.0	-5.7	-9.0
FY2012 – FY2020			
8 Term Average	13.1	1.5	1.9
FY2015 – FY2020			
5 Term Average	16.7	-0.7	-0.2

Recurring Profit (FY2012 = 100)

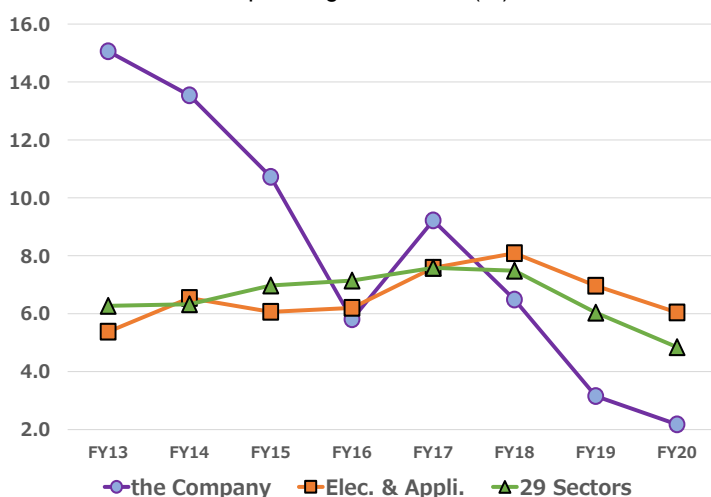


Recurring Profit Change (yoy, %)

	the Company	Elec. & Appli.	29 Sectors
FY2013	201.6	118.9	36.9
FY2014	25.3	26.9	7.3
FY2015	-42.2	-5.6	7.4
FY2016	-6.7	-3.4	0.8
FY2017	120.8	38.9	15.1
FY2018	-8.9	11.1	2.5
FY2019	-62.9	-20.7	-17.7
FY2020	-40.8	-15.9	-23.5
FY2012 – FY2020			
8 Term Average	-1.3	12.8	2.1
FY2015 – FY2020			
5 Term Average	-16.2	-0.1	-5.6

Sales Profitability

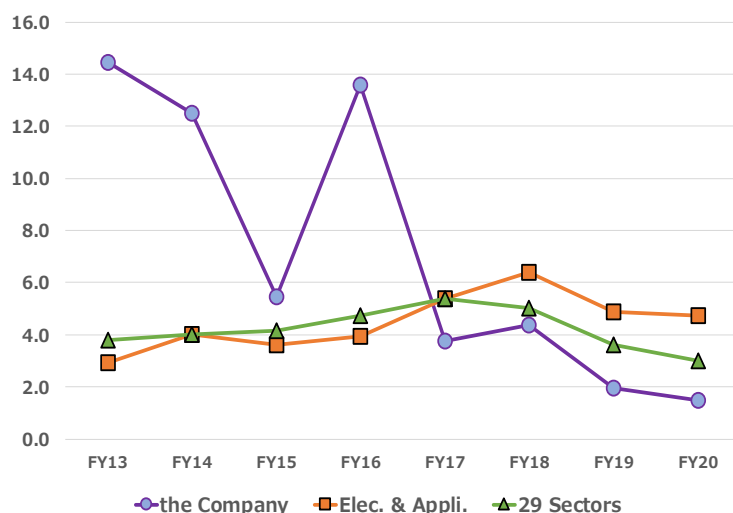
Operating Profit ROS (%)



Operating Profit ROS (%)

	the Company	Elec. & Appli.	29 Sectors
FY2013	15.1	5.4	6.3
FY2014	13.5	6.5	6.3
FY2015	10.7	6.1	7.0
FY2016	5.8	6.2	7.1
FY2017	9.2	7.6	7.6
FY2018	6.5	8.1	7.5
FY2019	3.2	7.0	6.0
FY2020	2.2	6.0	4.8
FY2013 – FY2020			
8 Term Average	8.3	6.6	6.6
FY2016 – FY2020			
5 Term Average	5.4	7.0	6.6

Net Profit ROS (%)

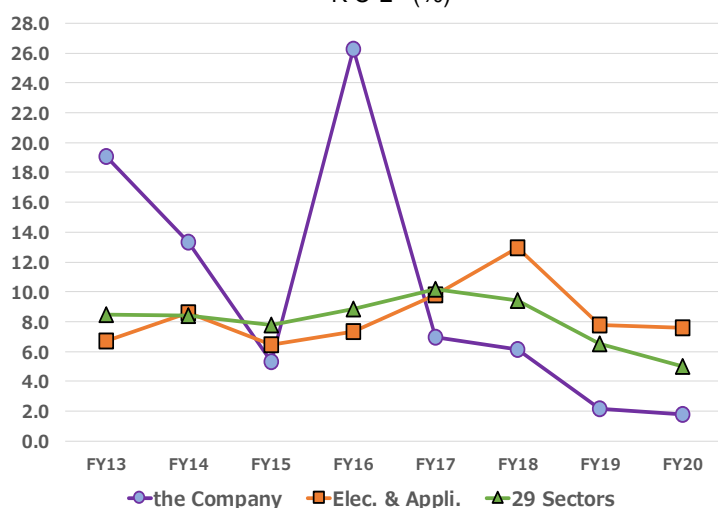


Net Profit ROS (%)

	the Company	Elec. & Appli.	29 Sectors
FY2013	14.5	2.9	3.8
FY2014	12.5	4.0	4.0
FY2015	5.5	3.6	4.1
FY2016	13.6	3.9	4.7
FY2017	3.8	5.4	5.4
FY2018	4.4	6.4	5.0
FY2019	1.9	4.9	3.6
FY2020	1.5	4.7	3.0
FY2013 – FY2020 8 Term Average	7.2	4.5	4.2
FY2016 – FY2020 5 Term Average	5.0	5.1	4.3

ROE

ROE (%)

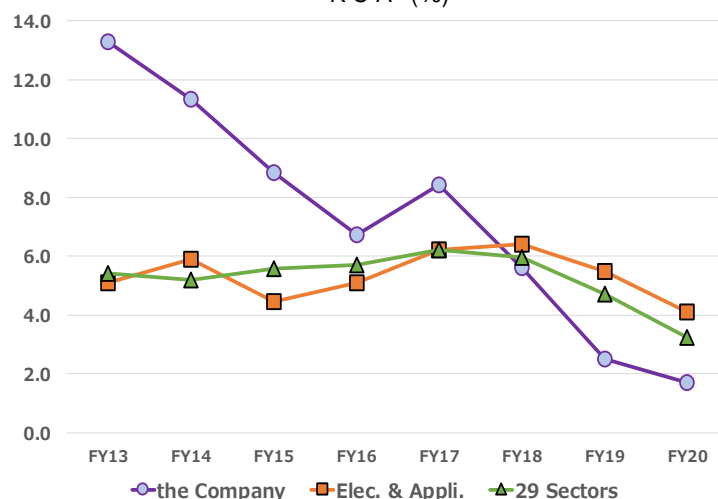


ROE (%)

	the Company	Elec. & Appli.	29 Sectors
FY2013	19.1	6.7	8.5
FY2014	13.3	8.6	8.4
FY2015	5.3	6.4	7.8
FY2016	26.3	7.3	8.8
FY2017	7.0	9.8	10.2
FY2018	6.2	13.0	9.4
FY2019	2.2	7.8	6.5
FY2020	1.8	7.6	5.0
FY2013 – FY2020 8 Term Average	10.1	8.4	8.1
FY2016 – FY2020 5 Term Average	8.7	9.1	8.0

ROA

ROA (%)



ROA (%)

	the Company	Elec. & Appli.	29 Sectors
FY2013	13.3	5.1	5.4
FY2014	11.3	5.9	5.2
FY2015	8.8	4.4	5.6
FY2016	6.7	5.1	5.7
FY2017	8.4	6.2	6.2
FY2018	5.6	6.4	6.0
FY2019	2.5	5.5	4.7
FY2020	1.7	4.1	3.2
FY2013 – FY2020 8 Term Average	7.3	5.3	5.3
FY2016 – FY2020 5 Term Average	5.0	5.5	5.2

Simplified Fact Sheet

Valuation Data, Profitability Indicators and Ranking

Dec. 9, 2020

Spring Capital Co., Ltd.

Valuation and Market Data as of Dec. 9, 2020

Closing Price	1,396.0	Year High	1,743.0	1/14/2020
PER (estimated)	44.92	Year Low	855.0	3/13/2020
PER (actual)	36.62	6-Month % Change	9.6 %	(TOPIX) 9.3 %
PBR (actual)	0.82	12-Month % Change	-4.4 %	(TOPIX) 3.3 %
Dividend Yield (actual)	2.87 %	12-Month Historical Volatility	52.7 %	(TOPIX) 22.2 %
EV/EBITDA	5.33			
PSR (forecast)	0.66			
PSR (actual)	0.71			

Profitability Indicators and All-Company Rankings as of Nov. 2020.

(29 sectors excluding financials) (calculated by Spring)

Fiscal Year		2015	2016	2017	2018	2019	2020
Accounting Period		2016/03	2017/03	2018/03	2019/03	2020/03	2021/03
		Actual	Actual	Actual	Actual	Actual	Est.
No. of Companies		3443	3467	3512	3512	3418	3512
Sales	Y mil	10,621	21,559	23,996	23,896	21,500	23,000
Ranking		2499	1951	1887	1944	1928	1829
Operating Profit	Y mil	1,139	1,251	2,212	1,550	678	500
Ranking		1845	1813	1477	1718	2158	2057
Recurring Profit	Y mil	970	905	1,998	1,820	676	400
Ranking		1951	2053	1571	1638	2172	2200
Net Profit	Y mil	580	2,930	902	1,049	417	340
Ranking		1912	978	1836	1680	2116	2019

* Percentage from the Top is not calculated for this section to exclude company size effects.

Operating Profit ROS	%	10.7	5.8	9.2	6.5	3.2	2.2
All Companies	%	6.2	6.7	7.3	7.2	5.9	4.8
Ranking		613	1587	901	1409	2252	2243
Percentage from the Top	%	17.8	45.8	25.7	40.1	65.9	63.9
Recurring Profit ROS	%	9.1	4.2	8.3	7.6	3.1	1.7
All Companies	%	6.2	6.7	7.4	7.2	6.1	5.2
Ranking		845	2081	1082	1217	2276	2406
Percentage from the Top	%	24.5	60.0	30.8	34.7	66.6	68.5
Net Profit ROS	%	5.5	13.6	3.8	4.4	1.9	1.5
All Companies	%	3.6	4.3	5.2	4.9	3.5	3.0
Ranking		971	194	1754	1457	2196	2183
Percentage from the Top	%	28.2	5.6	49.9	41.5	64.2	62.2

Simplified Fact Sheet

Dec. 9, 2020

ROE / ROA / Dividend Payout Ratio / DOE / Ranking

Spring Capital Co., Ltd.

ROE, ROA, Dividend Payout Ratio, and DOE Indicators and Rankings as of Nov. 2020.

(29 sectors excluding financials) (calculated by Spring)

Accounting Period		2015 2016/03 Actual	2016 2017/03 Actual	2017 2018/03 Actual	2018 2019/03 Actual	2019 2020/03 Actual	2020 2021/03 Est.
ROE	%	5.3	26.3	7.0	6.2	2.2	1.8
29 Sectors	%	7.8	8.8	10.2	9.4	6.5	5.0
Ranking		2072	146	1984	2065	2691	2444
No. of Companies		3421	3438	3493	3507	3509	3490
Percentage from the Top	%	60.6	4.2	56.8	58.9	76.7	70.0

* ROE is an important indicator, calculated as net profit / equity (= shareholders' equity), that measures the final profit secured using shareholders' equity.

As the average of term-end equity of 2 terms is used as the denominator, companies posting zero or negative equity during the relevant terms are excluded.

ROE for the latest quarter is calculated using estimated net profit for this term and shareholders' equity as of the end of the previous term and of the latest quarter.

ROA	%	8.8	6.7	8.4	5.6	2.5	1.7
29 Sectors	%	5.6	5.7	6.2	6.0	4.7	3.2
Ranking		877	1383	1045	1744	2654	2402
No. of Companies		3427	3450	3540	3512	3522	3512
Percentage from the Top	%	25.6	40.1	29.5	49.7	75.4	68.4

* ROA is calculated as Earnings before Interest and Taxes (operating profit + interest revenue + dividend income and interest on securities) / total assets. It is justifiable for a company to expand its business by financial leverage using debt, if the company's ROA exceeds the company's financing cost (e.g. cost of issuing 10-year corporate bonds = 2%).

Interest coverage ratio shown on P11 indicates the ratio of Earnings before Interest and Taxes to financial expenses (interest and discount expenses), with 10 times regarded as ideal.

If the interest coverage ratio holds a sufficient level with a high ROA and Profit Ratio of Sales, a company has no problem in financing aggressively.

As the average of term-end equity of 2 terms is used as the denominator, companies unable to be measured with the same standard are excluded.

ROA for the latest quarter is calculated using estimated operating profit for this term and total assets as of the end of the previous term and of the latest quarter.

Dividend Payout Ratio	%	58.6	10.4	37.8	40.5	divident exceeding net profit	
29 Sectors	%	33.8	30.1	27.4	32.4	46.8	
Ranking		197	2512	509	573	excluded	
No. of Companies		3238	3438	3525	3579	3548	
Percentage from the Top	%	6.1	73.1	14.4	16.0	excluded	

* Dividend Payout Ratio is calculated as total dividend / net profit. It should be noted that it may differ from the figure announced by the companies calculated from profit per share according to the accounting principle.

Data for total annual dividend exceeding net profit and dividend of unprofitable companies are excluded from the rankings.

DOE	%	3.1	2.7	2.6	2.5	2.3	
29 Sectors	%	2.7	2.8	2.9	3.0	3.1	
Ranking		602	907	936	1172	1314	
No. of Companies		3238	3438	3493	3507	3509	
Percentage from the Top	%	18.6	26.4	26.8	33.4	37.4	

* DOE, calculated as ROE times the dividend payout ratio, can be called the "true dividend payout ratio", and is closely tracked by global investors.

Its inverse (1 / DOE) equals the period (year) to recover shareholders' equity via the dividend.

As the average of term-end equity of two terms is used as the denominator, companies posting zero or negative equity during the relevant terms are excluded.

Simplified Fact Sheet

Dec. 9, 2020

Review of Financial Indicators and Financial Soundness based on Business Results

Spring Capital Co., Ltd.

Management Indicators, Cash Flow, and Financial Indicators Calculated by Spring based on Business Results Announced by the Company (million yen, %, multiple)

Fiscal Year Accounting Period		2015 2016/03	2016 2017/03	2017 2018/03	2018 2019/03	2019 2020/03	Latest Quarter
Data Source		Securities Report	Securities Report	Securities Report	Securities Report	Securities Report	Financial Results
Current Ratio	%	666.9	296.1	316.0	320.5	271.5	309.7
Fixed Assets Ratio	%	19.8	57.2	43.6	43.3	48.2	48.6
Equity Ratio	%	83.9	45.3	51.8	69.0	67.1	61.7
Debt Ratio	%	18.8	84.1	61.4	44.6	49.1	62.1
D/E Ratio	%	0.1	54.4	34.9	24.1	25.4	42.6
Interest Coverage Ratio	Multiple	1,154.0	31.3	69.9	52.6	27.0	Calc. only year-end
Financial Leverage	Multiple	1.2	2.2	1.9	1.4	1.5	1.6
CF from Operating Activities	Y mil	1,302	1,635	2,335	2,699	1,144	
CF from Investing Activities	Y mil	-169	2,714	-697	-3,256	-1,549	
CF from Financing Activities	Y mil	-422	-994	1,151	-928	-1,176	
(Cash and Cash Equivalents)	Y mil	(6,855)	(9,714)	(12,280)	(10,883)	(9,172)	
(EBITDA)	Y mil	(1,412)	(2,165)	(2,964)	(2,935)	(2,014)	

Review of Financial Soundness as of Dec. 9, 2020

Comparison with average data of all companies in the TSE 29 industrial sectors (excluding 4 financial sectors) and with the sector

		A 29 sectors	B Sector	Standard Criterion	Standard Value	Desirable Value	The Company	Result
Current Ratio	%	147.6	155.4	Lower of A or B	147.6	Higher	309.7	Positive
Fixed Assets Ratio	%	145.7	125.1	Higher of A or B	145.7	Lower	48.6	Positive
Equity Ratio	%	39.5	41.8	Lower of A or B	39.5	Higher	61.7	Positive
Debt Ratio	%	147.0	134.6	Higher of A or B	147.0	Lower	62.1	Positive
D/E Ratio	%	149.2	130.1	Higher of A or B	149.2	Lower	42.6	Positive

Corporate Information as of Dec. 9, 2020

Ticker Code	6616		
Company Name	TOREX SEMICONDUCTOR LTD.		
Head Office	3F Unizo Shinkawa Eitai Dori Bldg., 1-24-1 Shinkawa, Chuo-ku, Tokyo 104-0033 JAPAN		
Stock Listings	The Tokyo Stock Exchange, First Section		
TSE Industrial Sector	Electric Appliances		
Investment Unit	100 shares		
Minimum Investment	139,600	President	Koji Shibamiya
Date of Listing	4/8/2014	Paid-in Capital	2,967 mil yen
Date of Establishment	3/31/1995	Market Capitalization	16,130 mil yen ranked 1,981 of 3,835 companies
Accounting Period	March	25-Day Average Trading Value	47 mil yen ranked 2,055 of 3,835 companies
Floating Stock Ratio	14.2%	Market Cap as of March-end 2020	11,820 mil yen ranked 2,026 of 3,816 companies
Major Shareholder Ownership	67.8%	Average Trading Value in FY2019	59 mil yen ranked 1,858 of 3,816 companies

Disclaimers

- This report has been prepared under a contract between TOREX SEMICONDUCTOR LTD. (hereinafter, the "Company") and Spring Capital Co., Ltd. (hereinafter, "SC") by SC. In the contract, the Company has consented that SC prepare this report based entirely upon the standards of SC only and excluding any intervention by the Company on all items, including the qualitative information, the management indicators adopted in the Management Indicator Ranking, and the classification of business sectors (or the Company's business sector) chosen for the comparison report.
- This report has been prepared so that companies can monitor objectively prepared rankings of management indicators and is not aimed at soliciting investment. Therefore, investment decisions or activities should be made or done solely based on the investors' judgements, and neither the Company nor SC are responsible for any investment or consequence.
- SC has not placed a restriction on the Company regarding the distribution of this report, but all intellectual property rights, including the copyright of the Management Indicator Ranking and all data associated with the comparison report, belong to SC. Consequently, other parties including the readers of this report are strictly prohibited from publishing, reproducing, disclosing, or using in any other unauthorized fashion (including via electronic media) this report, its data, and other materials included in this report without SC's permission.

Disclaimers on Overall Management Indicator

- "All sectors" in this report refer to the 29 sectors that remain when the four financial sectors (Banks, Securities and Commodity Futures, Insurance, and Other Financials), which use different accounting standards, are excluded from the 33 sectors as defined by the Tokyo Stock Exchange, and consist of all companies whose common shares were listed on the Japanese stock market as of the end of March 2020. Since calculations of the Growth Potential, the ROA, the ROE, and other items use values from the full-year financial results of the most recent four fiscal years, the ranking excludes companies that did not announce full-year financial results and companies that had posted zero or negative equity at least once during the four-year period, as well as companies whose disclosed full-year financial results could not be recalculated into reasonable figures based on the Japanese GAAP and companies that had not been able to announce the financial results for FY 2019 by May 29, 2020. A total of 3,366 companies have been analyzed in the ranking.
- The values for FY 2020 used in this report have been adopted from one of the following sources in the order of decreasing priority: (1) the numbers in a company's disclosed financial results; (2) a company's forecast; or (3) estimates made by SC. In this current report based on Nov. 2020 data, SC's estimates for FY 2020 have been used for 254 companies.
- Going forward, the FY 2020 reports are scheduled to be prepared following the announcements of quarterly results by companies whose accounting period ends in March. Reports will be created based on the values available as of February 2021 and will be published the following month. The finalized ranking report for FY 2020 will be based on the values available as of May 2021 and will be published the following month. Regarding FY 2020, as described above, many companies have not announced their FY 2020 financial forecasts. It should be noted that the ranking in each report is likely to change drastically when those companies announce their financial forecasts.
- The Overall Management Indicator (scored by SC) in this report represents an overall score for the major categories (Growth Potential, Asset & Capital Profitability, Sales Profitability, and Sound Dividend Payout Ratio). The weighting for each category is 30%, 25%, 20%, and 25%, respectively.
- The intermediate and minor categories that compose each of the major categories are described on P4 and P5. For the minor categories, extreme values have been adjusted so that the highest and the lowest deviation values are 80 and 20, respectively. For the intermediate and major categories, no adjustment has been made since SC scored both categories based on the minor categories, but the average SC score for the major categories is 50 due to the repeated processing to seek deviation values.
- On P7-P8, a comparison is made for the Growth Potential, Sales Profitability, ROE, and ROA with the 29 business sectors and with the Company's sector as defined by the Tokyo Stock Exchange. The figures for ROE and ROA used in the comparison match those on P10. However, regarding the Growth Potential and the Sales Profitability, the figures do not match those on P9. This difference is due to the fact that, for the purpose of comparing the Growth Potential over the long term, the target companies for the comparison report have been limited to only those in the 29 business sectors and the Company's sector (as defined by the Tokyo Stock Exchange) that have continuously announced their full-year financial results from FY 2010 to FY 2019. Adjustment of the universe for the comparison of the Growth Potential is conducted every year in the finalized ranking report for the previous fiscal year that is based on the values available as of May.
- The data in this report on corporate financial results are owned by SC, and a part of the data has been verified for greater accuracy with information vendors with whom SC has a contract. However, SC does not guarantee integrity of its data. The contents of this report were relevant as of the time that this report was created and may change without prior notice.